

# Specification



## ZE1200V-300

ZERES 5 Series: Electric with Integrated Hydraulics



Clamping Unit		ZE1200 V
Clamping Force	kN	1200
	US Tons	135
Mold Opening Stroke	mm	360
	in.	14.17
Minimum Mold Height	mm	150
	in.	5.91
Maximum Mold Height	mm	480
	in.	18.9
Maximum Daylight	mm	840
	in.	33.07
Distance Between Tie-Bars (HXV)	mm	470x470
	in.	18.5x18.5
Platen Dimensions (HXV)	mm	640x640
	in.	25.2x25.2
Minimum Mold Size	mm	305x305
	in.	12.01x12.01
Ejector Stroke	mm	100
	in.	3.94
Ejector Force	kN	33
	US Tons	4

# Specification



## ZE1200V-300

ZERES 5 Series: Electric with Integrated Hydraulics

Injection Unit		300			
Screw & Barrel Designation		AA	A	B	C
Screw Diameter	mm	30	32	36	40
	in.	1.18	1.26	1.42	1.57
Screw L/D Ratio	L/D	21	22.5	20	18
Injection Volume (Theoretical)	cm <sup>3</sup>	102	116	147	182
	cu.in.	6.22	7.08	8.97	11.11
Injection Weight (PS)	g	92	106	134	165
	oz.	3.25	3.74	4.73	5.82
Injection Pressure	MPa	280	253	200	162
	psi	40611	36695	29008	23496
Holding Pressure	MPa	224	202	160	130
	psi	32488	29298	23206	18855
Screw Speed	rpm	400	400	400	400
Plasticizing Rate (GPPS)	g/s	13.3	16.6	20.1	27.7
	oz./s	0.47	0.59	0.71	0.98
Nozzle Contact Force	kN	65	65	65	65
	US Tons	7	7	7	7
Injection Unit		300			
Injection Speed	mm/s	200			
	in./s	7.87			
Injection Rate (PS)	g/s	123	140	177	219
	oz./s	4.34	4.94	6.24	7.72
Injection Unit		300h			
Injection Speed	mm/s	300			
	in./s	11.81			
Injection Rate (PS)	g/s	185	210	266	329
	oz./s	6.53	7.41	9.38	11.61
Injection Unit		300hs			
Injection Speed	mm/s	500			
	in./s	19.69			
Injection Rate (PS)	g/s	308	351	444	548
	oz./s	10.86	12.38	15.66	19.33

# Specification



## ZE1200V-300

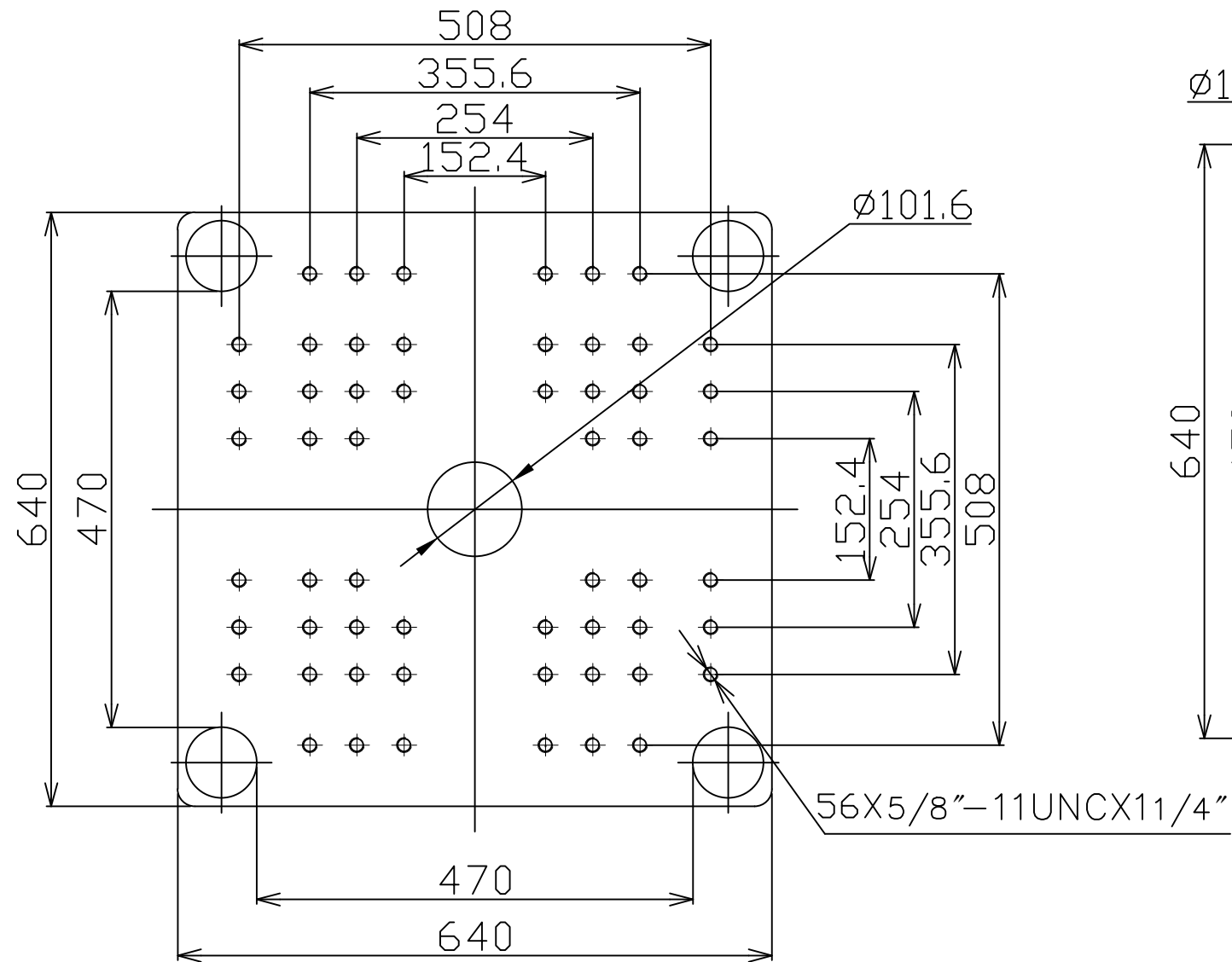
ZERES 5 Series: Electric with Integrated Hydraulics

Other					
Connection Power	kW/A	300:20/34 300h:26/43 300hs:37/61			
Heating Power	kW	10.3	11.9	11.9	11.9
Machine Dimension	m	4.83x1.36x2.11			
	in.	190x54x83			
Machine Weight	t	5			
	lbs.	11023			
Hopper Capacity (OP)	l	25			
	gal	7			
Oil Pressure	MPa	17.5			
	psi	2538			
Oil Flow	l/min	48			
	gal/min	13			
Oil Tank	l	78			
	gal	21			

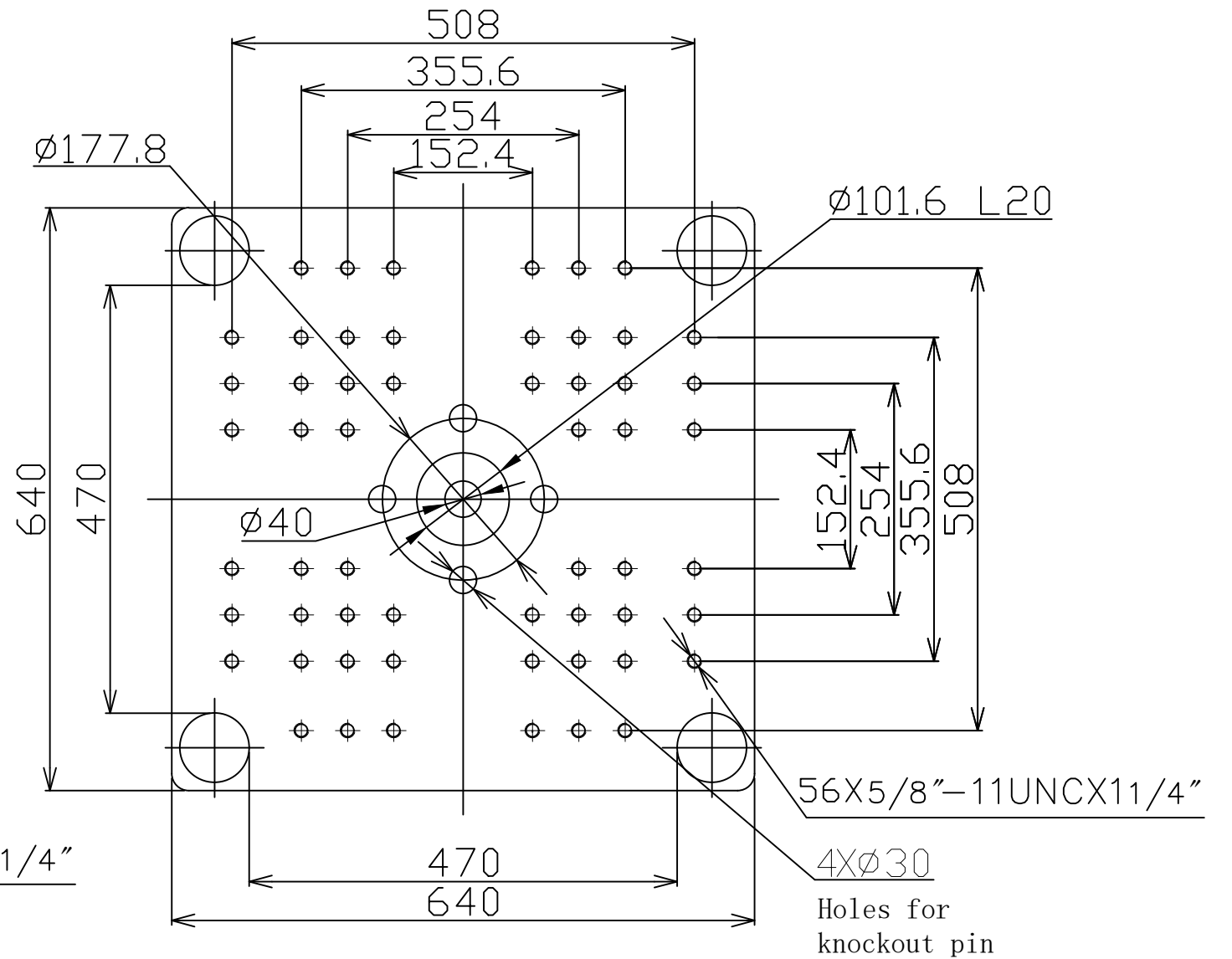
**\*NOTE:**

1. Machine dimensions and weights are based on the international standard configuration and are for reference only. Any options or country specific requirements will affect this. Contact Absolute Haitian service department for machine specific information.
2. Power requirements are based on the international standard configuration and are for reference only. Any options or country specific requirements will affect this. Contact Absolute Haitian service department for machine specific information.





Fixed Platen



Moving Platen



Absolute Haitian Corporation  
33 Southgate St. Worcester, MA  
T: +1 508-792-4305  
www.absolutehaitian.com

Title: ZE/VEV 1200 Fixed & Moving Platens Drawing

Machine Model: ZE/VEV 1200  
Machine Serial Number:  
Machine Tonnage:

Sheet: 1 of 1

Drawn By: Harry

Date: 1/9/2024

Chkd By: LEON XIE

Date: 1/9/2024

Revision Date: Drawing #:

Rev #: 1

Rev #: 2

Rev #: 3

Rev #: 4

Rev #: 5

NOT TO SCALE

Size: 11 X 17 "B"

Units: mm / [in]

Material:

Part:

Part:

Part:

Part:

PLEASE READ:

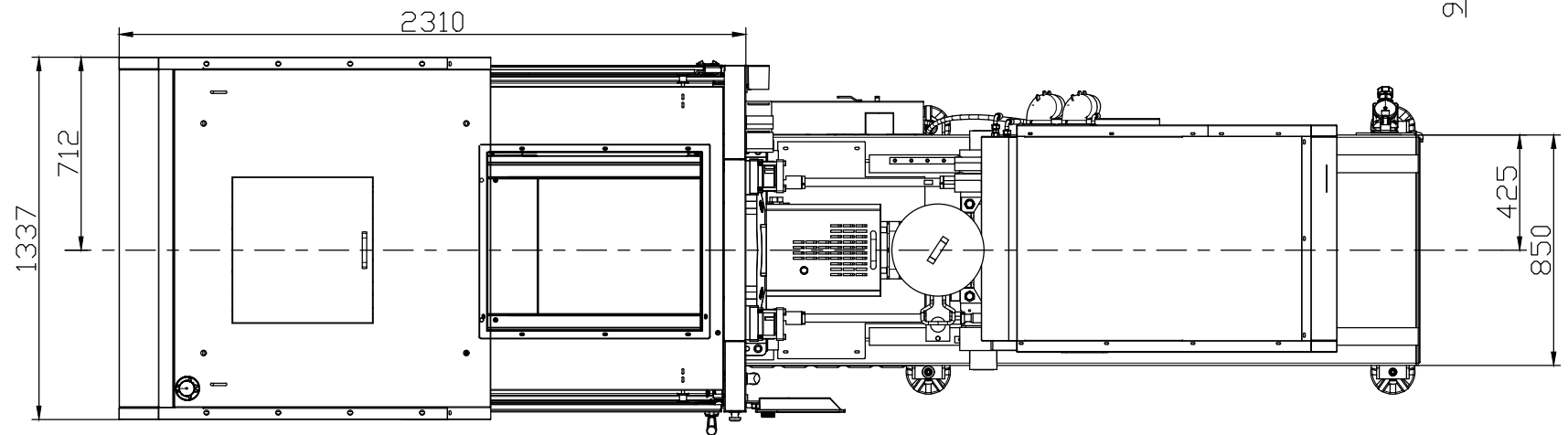
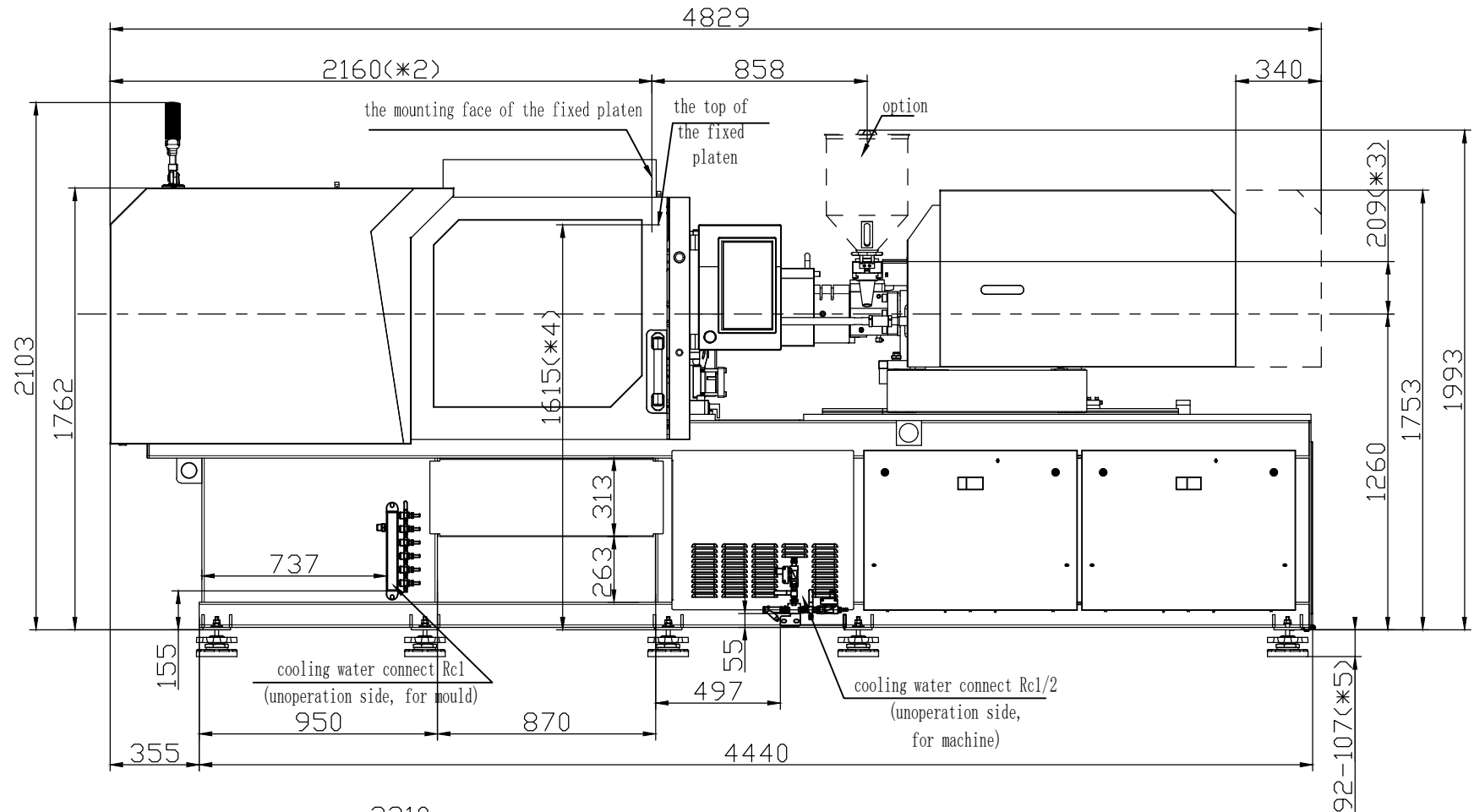
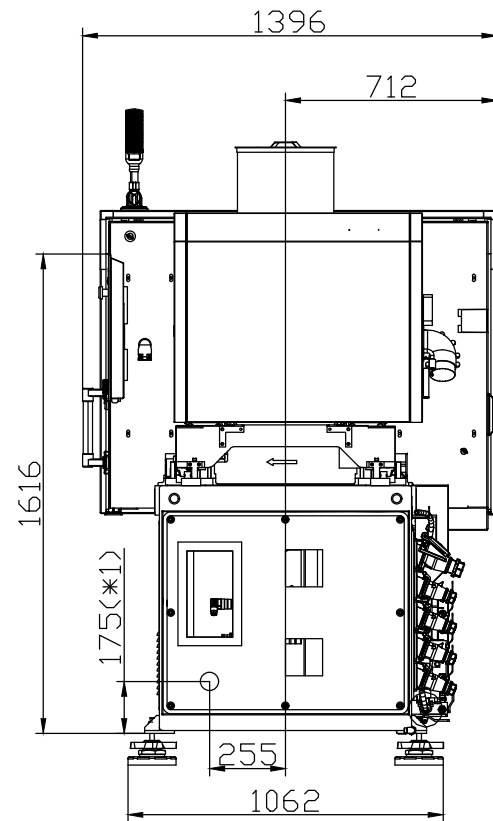
The designs on this drawing were validated using machine manufacturer's drawings and/or information supplied by Absolute or the customer. It is the responsibility of the customer to review and confirm that all dimensions are consistent with the application intended and in accordance with the facility requirements for space, part clearance, overhead clearance, or any other interference. By signing this document, the customer accepts full responsibility for this design and application.

Customer:

Customer Approval:

Authorized Signature

Notes:



- \*1 Power in
- Current and Power Cable are shown
- in the Main Power Supply Circuit
- \*2 To the mounting face of the
- fixed platen
- \*3 To the face of Hopper fixing platform
- \*4 To the top of the fixed platen
- \*5 Vibration dumping support



Absolute Haitian Corporation  
33 Southgate St. Worcester, MA  
T:+1 508-792-4305  
www.absolutehaitian.com

Title: ZE V 1200-300 Layout Drawing

Machine Model: ZE V 1200-300

Machine Serial Number:

Machine Tonnage:

Sheet: 1 of 1

Drawn By: Harry

Date: 3/22/2024

Chkd By: LEON XIE

Date: 3/22/2024

NOT TO SCALE

Size: 11 X 17 "B"

Units: mm / [in]

Material:

Part:

Part:

Part:

Part:

PLEASE READ:

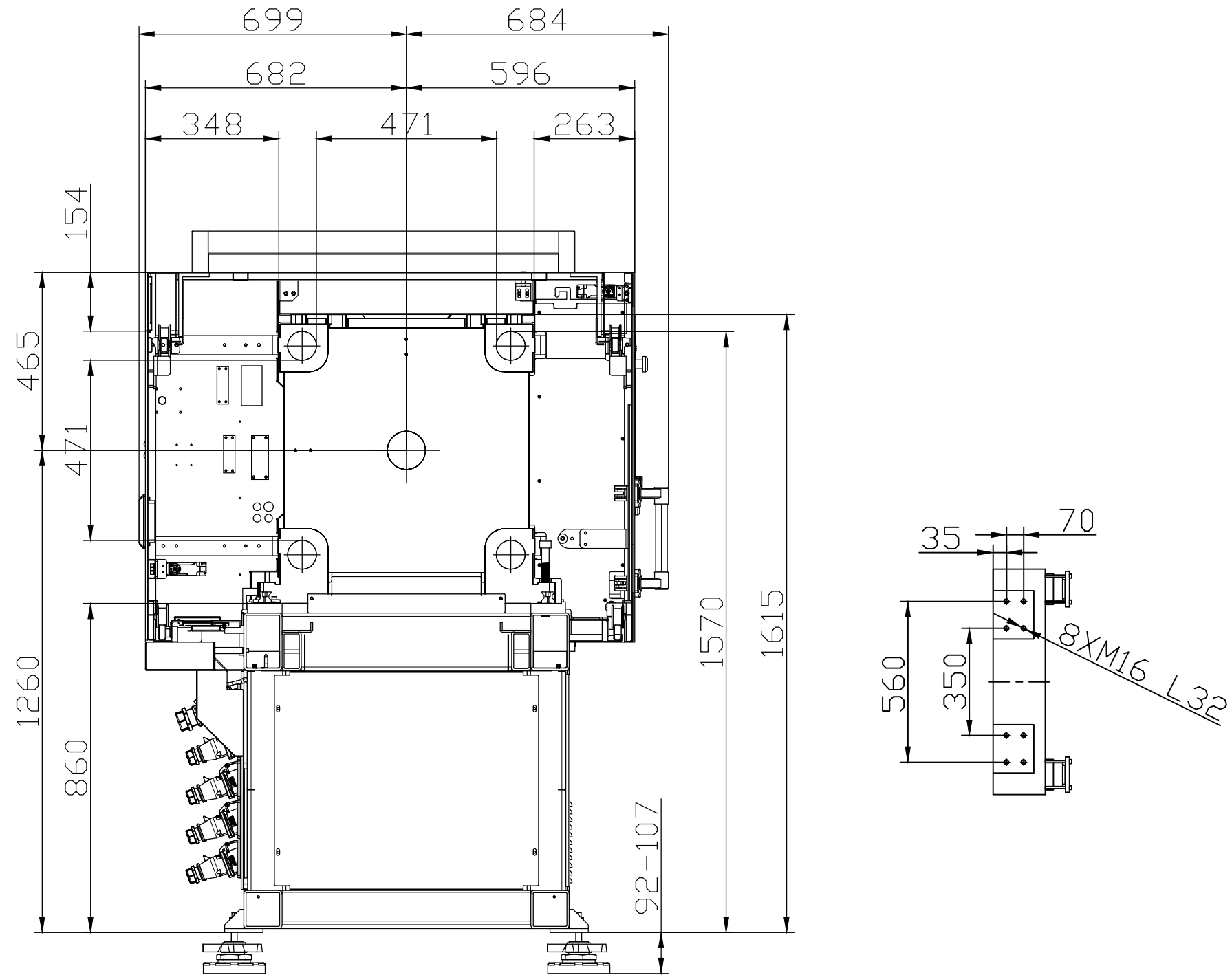
The designs on this drawing were validated using machine manufacturer's drawings and/or information supplied by Absolute or the customer. It is the responsibility of the customer to review and confirm that all dimensions are consistent with the application intended and in accordance with the facility requirements for space, part clearance, overhead clearance, or any other interference. By signing this document, the customer accepts full responsibility for this design and application.

Customer:

Customer Approval:

Authorized Signature

Notes:



Absolute Haitian Corporation  
33 Southgate St. Worcester, MA  
T:+1 508-792-4305  
www.absolutehaitian.com

Title: ZE V 1200 Robot Mounting Drawing

Machine Model: ZE V 1200

Machine Serial Number:

Machine Tonnage:

Sheet: 1 of 1

Drawn By: Harry

Date: 4/9/2024

Chkd By: LEON XIE

Date: 4/9/2024

Revision Date: Drawing #: Robot Mounting

NOT TO SCALE

Size: 11 X 17 "B"

Rev #: 1

Rev #: 2

Rev #: 3

Rev #: 4

Rev #: 5

Units: mm / [in]

Material:

Part:

Part:

Part:

Part:

PLEASE READ:

The designs on this drawing were validated using machine manufacturer's drawings and/or information supplied by Absolute or the customer. It is the responsibility of the customer to review and confirm that all dimensions are consistent with the application intended and in accordance with the facility requirements for space, part clearance, overhead clearance, or any other interference. By signing this document, the customer accepts full responsibility for this design and application.

Customer:

Customer Approval:

Authorized Signature

Notes: