

# Specification



## ZE400V-80

ZERES 5 Series: Electric with Integrated Hydraulics



Clamping Unit		ZE400 V
Clamping Force	kN	400
	US Tons	45
Mold Opening Stroke	mm	235
	in.	9.25
Minimum Mold Height	mm	150
	in.	5.91
Maximum Mold Height	mm	320
	in.	12.6
Maximum Daylight	mm	555
	in.	21.85
Distance Between Tie-Bars (HXV)	mm	320x320
	in.	12.6x12.6
Platen Dimensions (HXV)	mm	440x440
	in.	17.32x17.32
Minimum Mold Size	mm	205x205
	in.	8.07x8.07
Ejector Stroke	mm	60
	in.	2.36
Ejector Force	kN	9.8
	US Tons	1

# Specification



## ZE400V-80

ZERES 5 Series: Electric with Integrated Hydraulics

Injection Unit		80		
Screw & Barrel Designation		A	B	C
Screw Diameter	mm	19	22	26
	in.	0.75	0.87	1.02
Screw L/D Ratio	L/D	21	22	18
Injection Volume (Theoretical)	cm <sup>3</sup>	21	36	50
	cu.in.	1.28	2.20	3.05
Injection Weight (PS)	g	19.1	32.8	45.5
	oz.	0.67	1.16	1.60
Injection Pressure	MPa	260	220	157
	psi	37710	31908	22771
Holding Pressure	MPa	208	175	125
	psi	30168	25382	18130
Screw Speed	rpm	400	400	400
Plasticizing Rate (GPPS)	g/s	3.8	6	8
	oz./s	0.13	0.21	0.28
Nozzle Contact Force	kN	26	26	26
	US Tons	3	3	3
Injection Unit		80		
Injection Speed	mm/s	200		
	in./s	7.87		
Injection Rate (PS)	g/s	49	66	92
	oz./s	1.73	2.33	3.25
Injection Unit		80h		
Injection Speed	mm/s	350		
	in./s	13.78		
Injection Rate (PS)	g/s	86	116	162
	oz./s	3.03	4.09	5.71
Injection Unit		80hs		
Injection Speed	mm/s	500		
	in./s	19.69		
Injection Rate (PS)	g/s	123	166	231
	oz./s	4.34	5.86	8.15

# Specification



## ZE400V-80

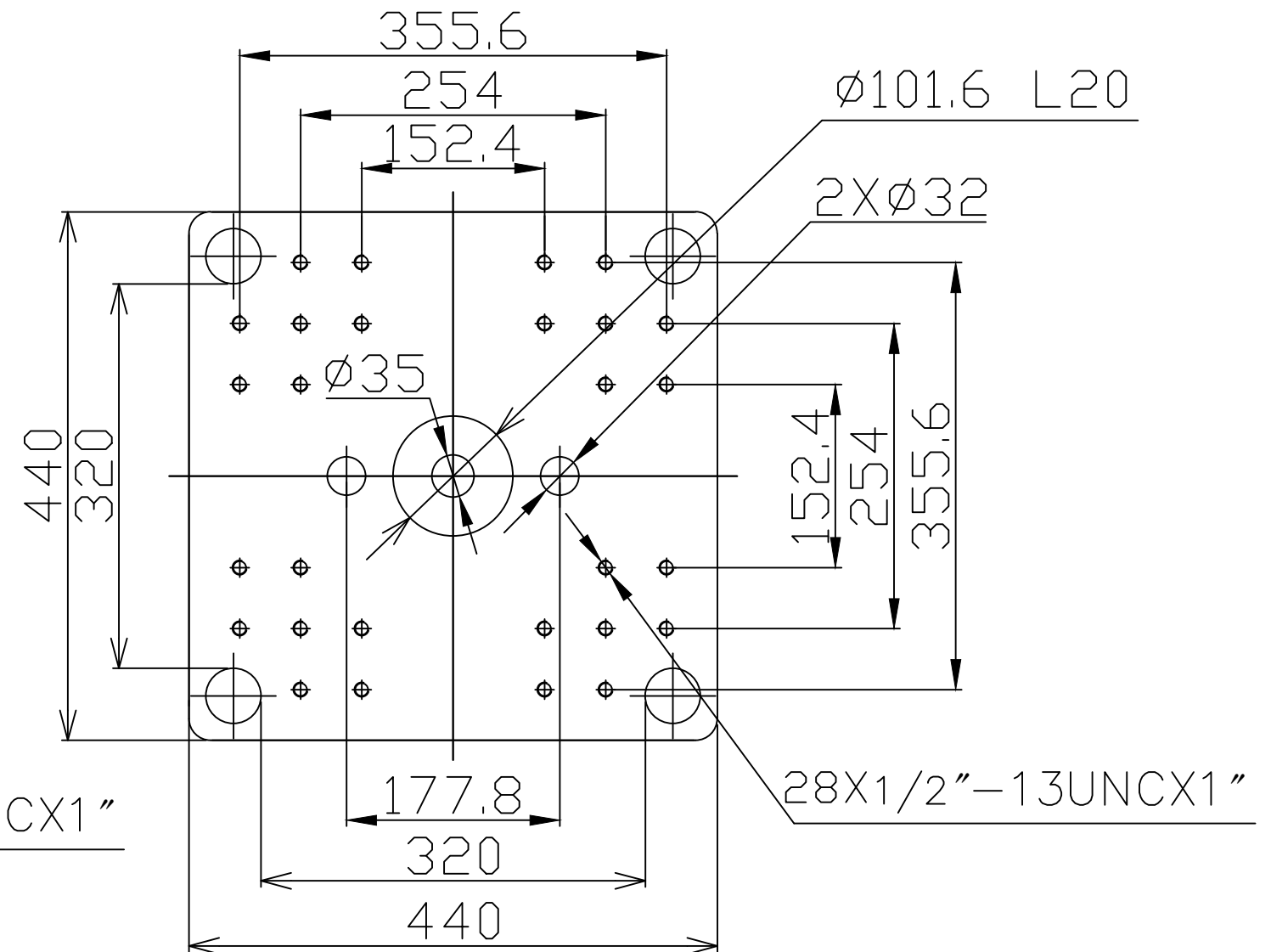
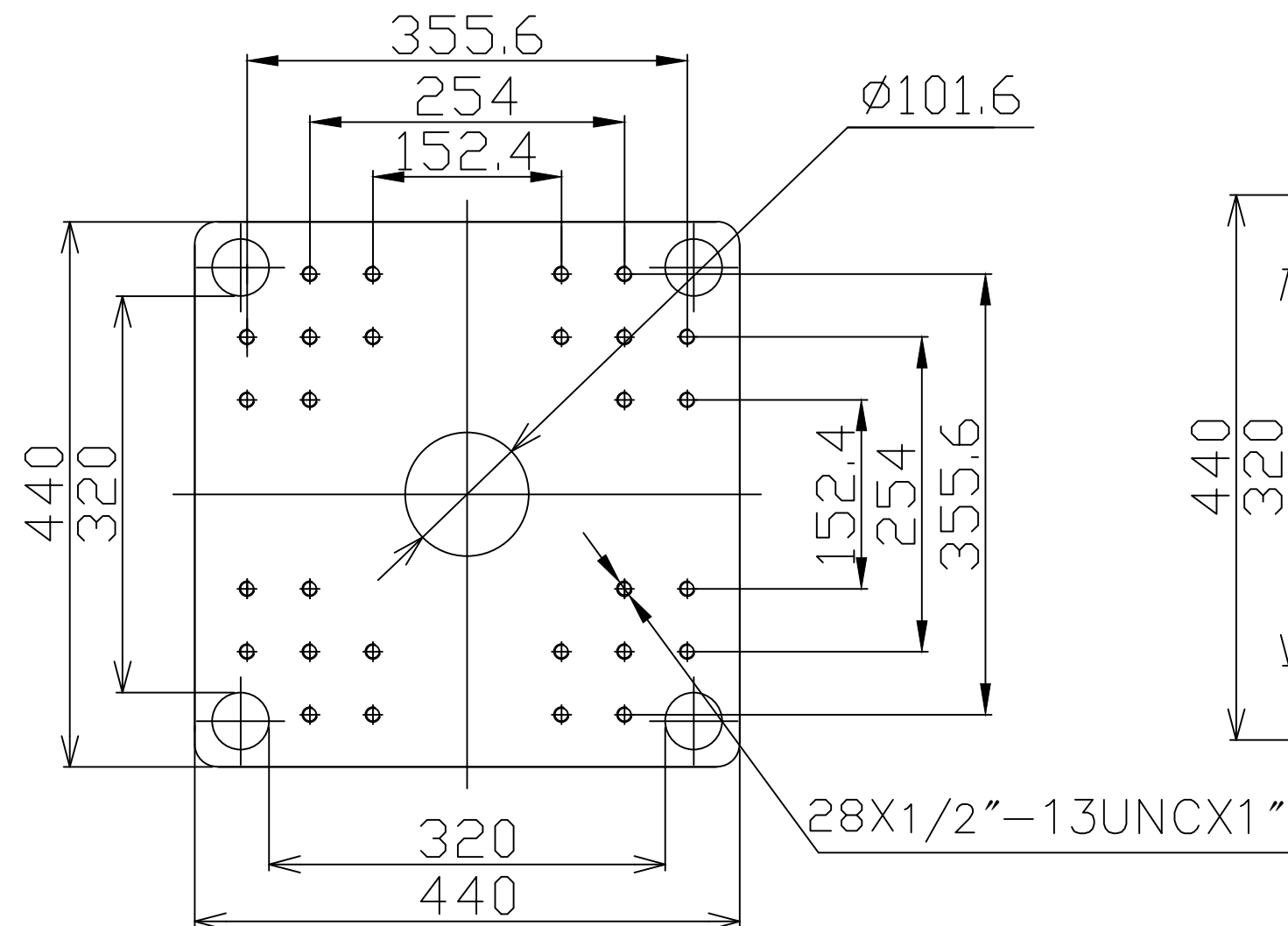
ZERES 5 Series: Electric with Integrated Hydraulics

Other				
Connection Power	kW/A	80:11/19 80h:13/22 80hs:16/28		
Heating Power	kW	4.5	5.7	5.7
Machine Dimension	m	3.67x1.14x1.85		
	in.	144x45x73		
Machine Weight	t	2.63		
	lbs.	5798		
Hopper Capacity (OP)	l	15		
	gal	4		
Oil Pressure	MPa	17.5		
	psi	2538		
Oil Flow	l/min	24		
	gal/min	6		
Oil Tank	l	31		
	gal	8		

**\*NOTE:**

1. Machine dimensions and weights are based on the international standard configuration and are for reference only. Any options or country specific requirements will affect this. Contact Absolute Haitian service department for machine specific information.
2. Power requirements are based on the international standard configuration and are for reference only. Any options or country specific requirements will affect this. Contact Absolute Haitian service department for machine specific information.





# Fixed Platen

# Moving Platen



**Absolute Haitian Corporation**  
**33 Southgate St. Worcester, MA**  
**T: +1 508-792-4305**  
**[www.absolutehaitian.com](http://www.absolutehaitian.com)**

Title: ZE/VEV 400 Fixed & Moving Platens Drawing				
Machine Model: ZE/VEV 400 Machine Serial Number: Machine Tonnage:			Sheet: 1 of 1	
			Drawn By: Harry	Date: 1/9/2024
			Chkd By:LEON XIE	Date: 1/9/2024
Revision	Date:	Drawing #:	NOT TO SCALE	Size: 11 X 17 "B"
Rev #: 1				Units: mm / [in]
Rev #: 2				Material:
Rev #: 3				Part:
Rev #: 4				Part:
Rev #: 5				Part:

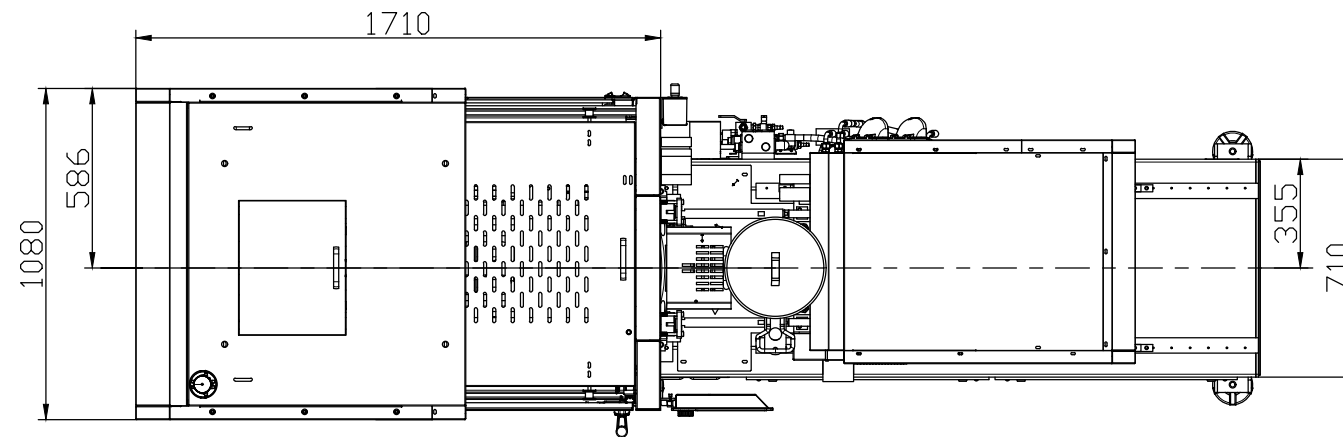
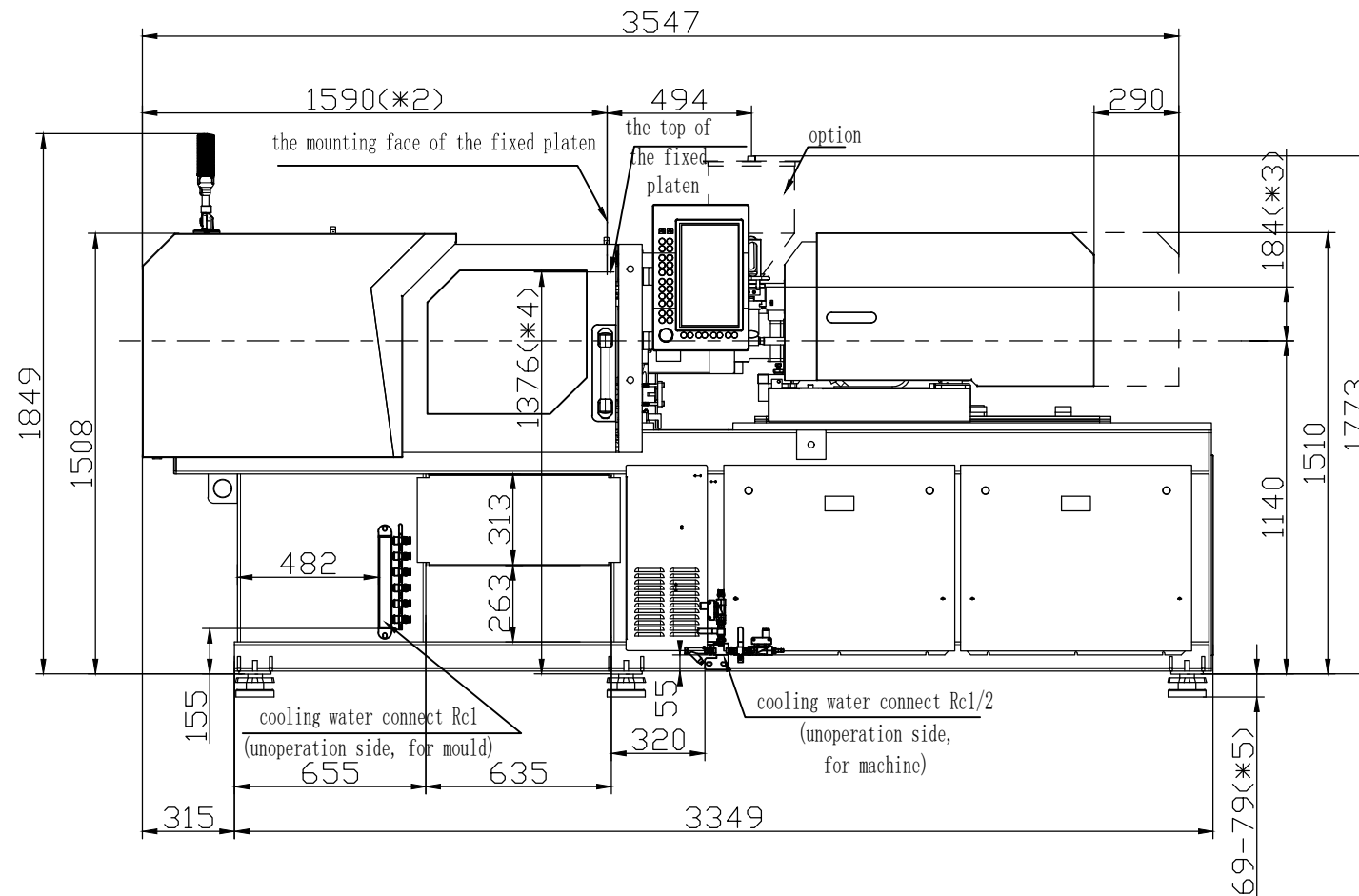
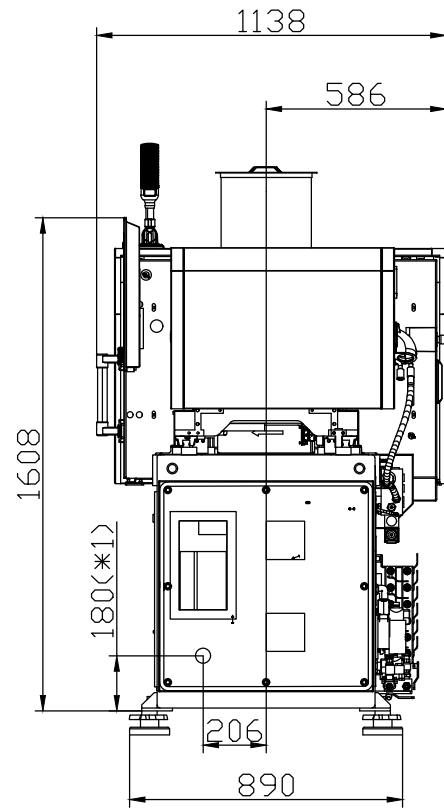
PLEASE READ:

The designs on this drawing were validated using machine manufacturer's drawings and/or information supplied by Absolute or the customer. It is the responsibility of the customer to review and confirm that all dimensions are consistent with the application intended and in accordance with the facility requirements for space, part clearance, overhead clearance, or any other interference. By signing this document, the customer accepts full responsibility for this design and application.

Customer:

**Customer Approval:**

	<b>Notes:</b>
--	---------------



- \*1 Power in  
Current and Power Cable are shown  
in the Main Power Supply Circuit
- \*2 To the mounting face of the  
fixed platen
- \*3 To the face of Hopper fixing platform
- \*4 To the top of the fixed platen
- \*5 Vibration dumping support



Absolute Haitian Corporation  
33 Southgate St. Worcester, MA  
T:+1 508-792-4305  
www.absolutehaitian.com

Title: ZE V 400-80 Layout Drawing

Machine Model: ZE V 400-80

Machine Serial Number:

Machine Tonnage:

Sheet: 1 of 1

Drawn By: Harry

Date: 3/22/2024

Chkd By: LEON XIE

Date: 3/22/2024

Revision Date: Drawing #: Layout

Rev #: 1

Rev #: 2

Rev #: 3

Rev #: 4

Rev #: 5

NOT TO SCALE

Size: 11 X 17 "B"

Units: mm / [in]

Material:

Part:

Part:

Part:

Part:

PLEASE READ:

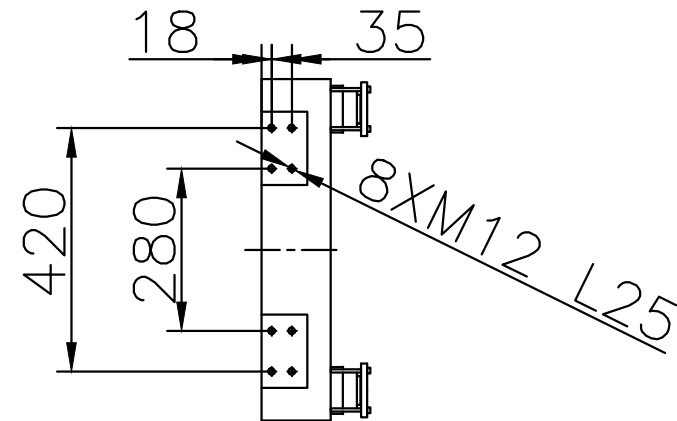
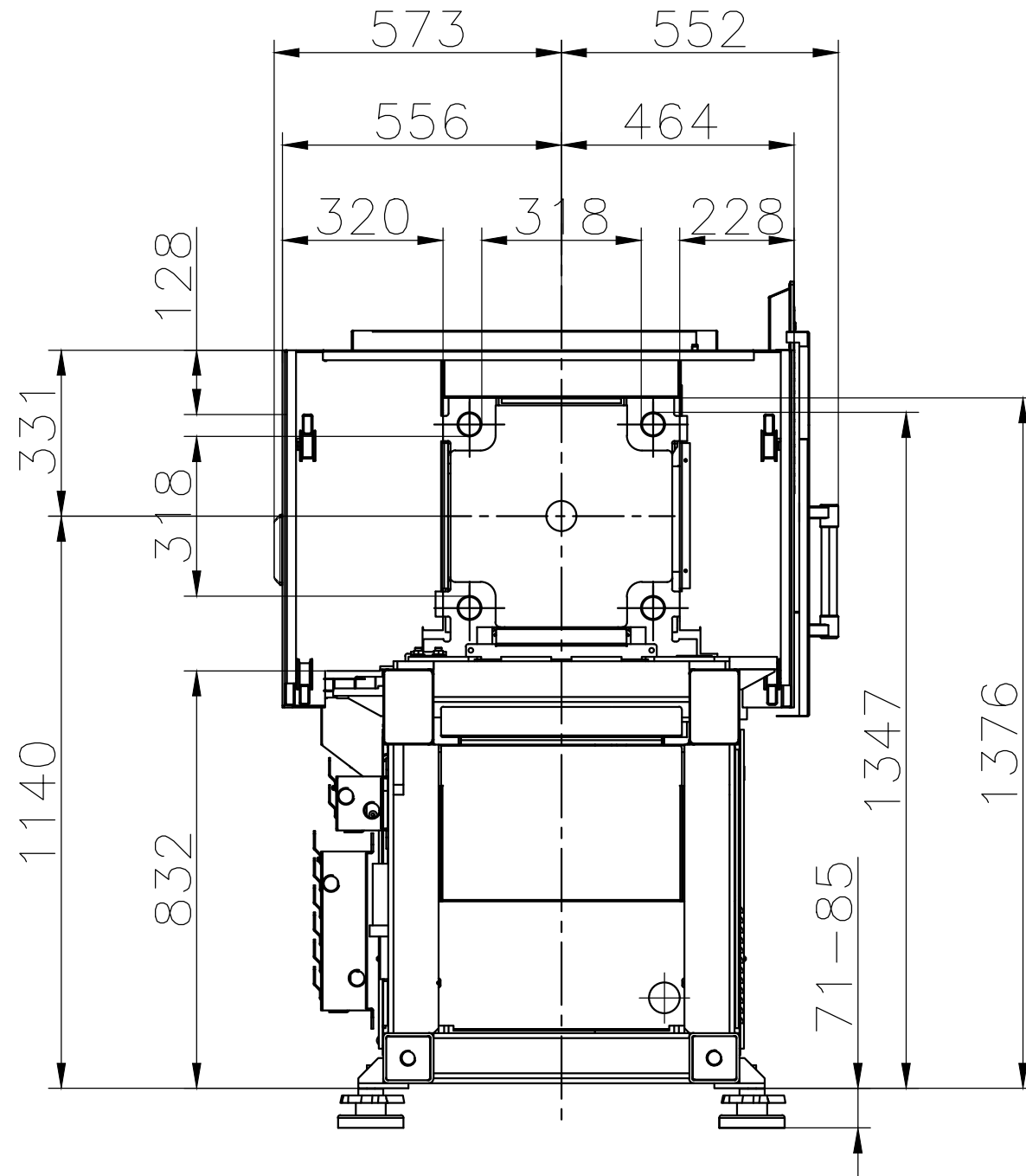
The designs on this drawing were validated using machine manufacturer's drawings and/or information supplied by Absolute or the customer. It is the responsibility of the customer to review and confirm that all dimensions are consistent with the application intended and in accordance with the facility requirements for space, part clearance, overhead clearance, or any other interference. By signing this document, the customer accepts full responsibility for this design and application.

Customer:

Customer Approval:

Authorized Signature

Notes:



Absolute Haitian Corporation  
33 Southgate St. Worcester, MA  
T:+1 508-792-4305  
www.absolutehaitian.com

Title: ZE V 400 Robot Mounting Drawing

Machine Model: MA III 12000-8400 B

Machine Serial Number:

Machine Tonnage:

Sheet: 1 of 1

Drawn By: Harry

Date: 4/9/2024

Chkd By: LEON XIE

Date: 4/9/2024

NOT TO SCALE

Size: 11 X 17 "B"

Units: mm / [in]

Material:

Part:

Part:

Part:

Part:

Part:

PLEASE READ:

The designs on this drawing were validated using machine manufacturer's drawings and/or information supplied by Absolute or the customer. It is the responsibility of the customer to review and confirm that all dimensions are consistent with the application intended and in accordance with the facility requirements for space, part clearance, overhead clearance, or any other interference. By signing this document, the customer accepts full responsibility for this design and application.

Customer:

Customer Approval:

Authorized Signature

Notes: