

# Specification



## ZE8000V-5200

ZERES 5 Series: Electric with Integrated Hydraulics



Clamping Unit		ZE8000 V
Clamping Force	kN	8000
	US Tons	899
Mold Opening Stroke	mm	1000
	in.	39.37
Minimum Mold Height	mm	420
	in.	16.54
Maximum Mold Height	mm	1000
	in.	39.37
Maximum Daylight	mm	2000
	in.	78.74
Distance Between Tie-Bars (HXV)	mm	1080x1080
	in.	42.52x42.52
Platen Dimensions (HXV)	mm	1480x1480
	in.	58.27x58.27
Minimum Mold Size	mm	700x700
	in.	27.56x27.56
Ejector Stroke	mm	200
	in.	7.87
Ejector Force	kN	196
	US Tons	22

# Specification



## ZE8000V-5200

ZERES 5 Series: Electric with Integrated Hydraulics

Injection Unit		5200		
Screw & Barrel Designation		A	B	C
Screw Diameter	mm	80	90	100
	in.	3.15	3.54	3.94
Screw L/D Ratio	L/D	24.8	22	19.8
Injection Volume (Theoretical)	cm <sup>3</sup>	2261	2862	3534
	cu.in.	137.97	174.65	215.66
Injection Weight (PS)	g	2058	2605	3216
	oz.	72.59	91.89	113.44
Injection Pressure	MPa	227	180	145
	psi	32924	26107	21030
Holding Pressure	MPa	204	162	131
	psi	29588	23496	19000
Screw Speed	rpm	190	190	190
Plasticizing Rate (GPPS)	g/s	85	107	131
	oz./s	3.00	3.77	4.62
Nozzle Contact Force	kN	85	85	85
	US Tons	10	10	10
Injection Unit		5200		
Injection Speed	mm/s	160		
	in./s	6.3		
Injection Rate (PS)	g/s	702	889	1097
	oz./s	24.76	31.36	38.70

# Specification



## ZE8000V-3350

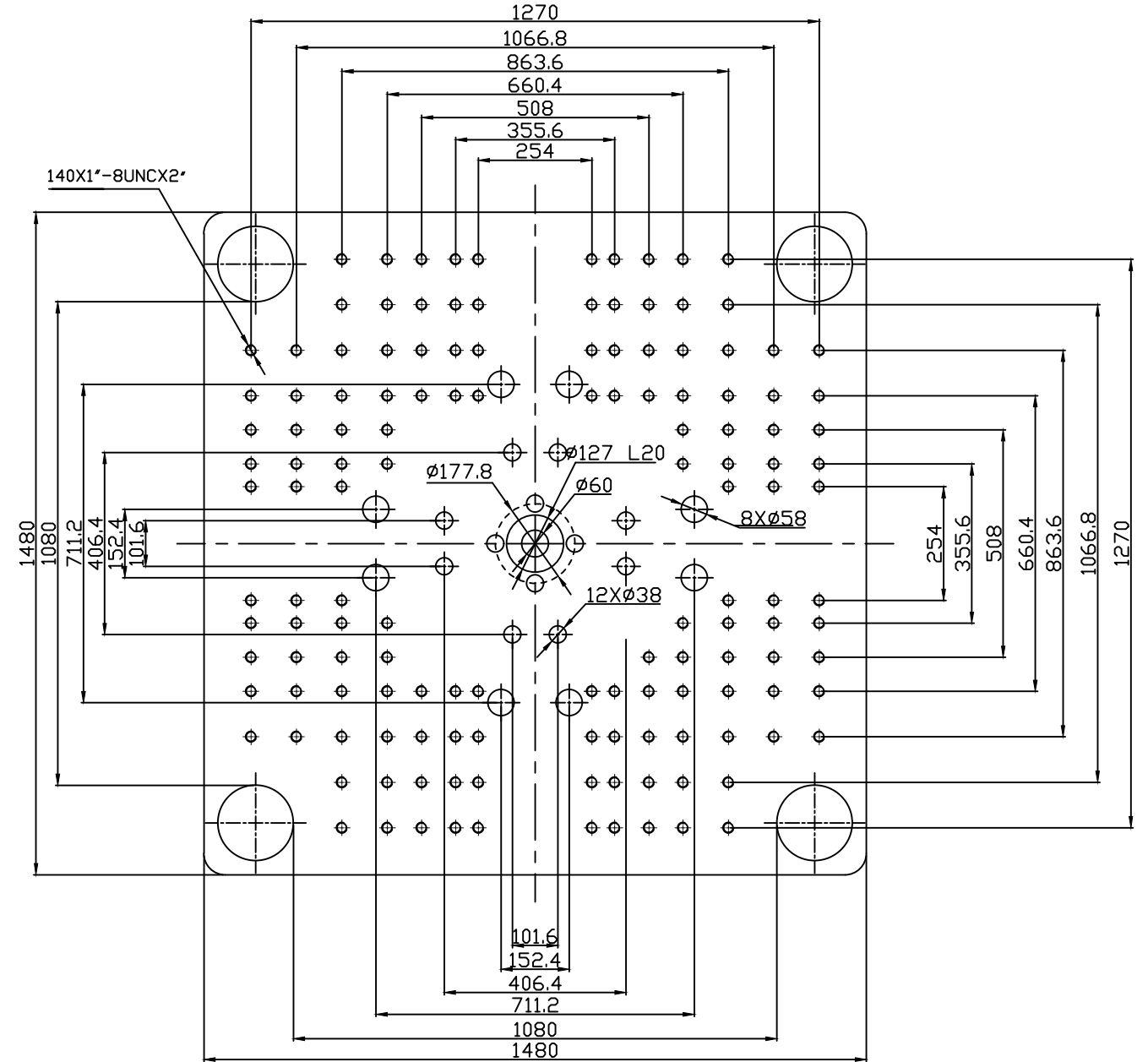
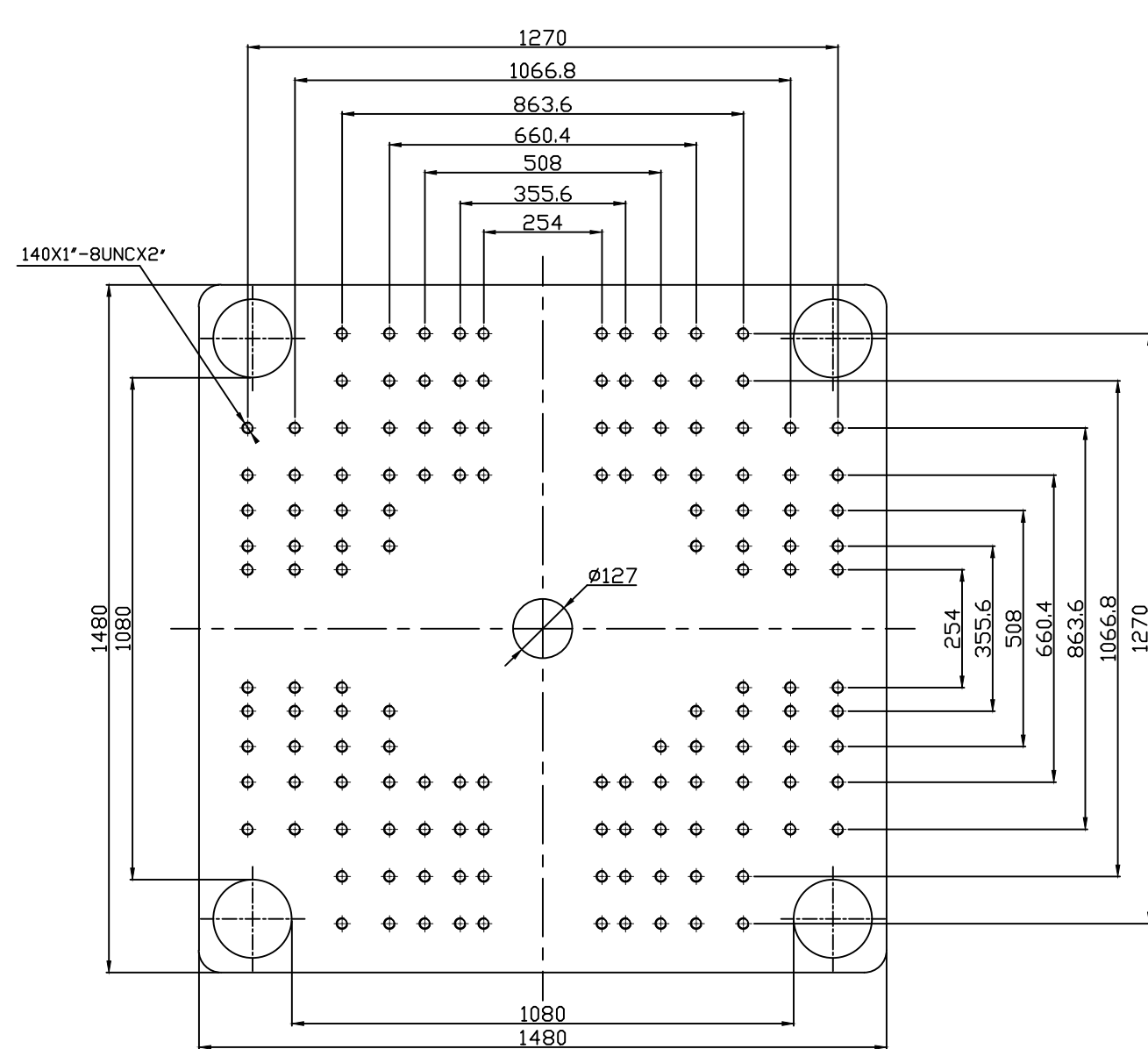
ZERES 5 Series: Electric with Integrated Hydraulics

Other		
Connection Power	kW/A	98/164
Heating Power	kW	54.3
Machine Dimension	m	9.81x2.44x2.70
	in.	386x96x106
Machine Weight	t	38.9
	lbs.	85760
Hopper Capacity	l	100
	gal	26
Oil Pressure	MPa	17.5
	psi	2538
Oil Flow	l/min	252
	gal/min	67
Oil Tank	l	353
	gal	93

**\*NOTE:**

1. Machine dimensions and weights are based on the international standard configuration and are for reference only. Any options or country specific requirements will affect this. Contact Absolute Haitian service department for machine specific information.
2. Power requirements are based on the international standard configuration and are for reference only. Any options or country specific requirements will affect this. Contact Absolute Haitian service department for machine specific information.





Absolute Haitian Corporation  
33 Southgate St. Worcester, MA  
T:+1 508-792-4305  
www.absolutehaitian.com

Title: ZE V 8000 Fixed & Moving Platens Drawing

Machine Model: ZE V 8000  
Machine Serial Number:  
Machine Tonnage:

Sheet: 1 of 1

Drawn By: Harry

Date: 5/30/2024

Chkd By: LEON XIE

Date: 5/30/2024

Revision Date: Drawing #:

Rev #: 1

Rev #: 2

Rev #: 3

Rev #: 4

Rev #: 5

NOT TO SCALE

Size: 11 X 17 "B"

Units: mm / [in]

Material:

Part:

Part:

Part:

Part:

PLEASE READ:

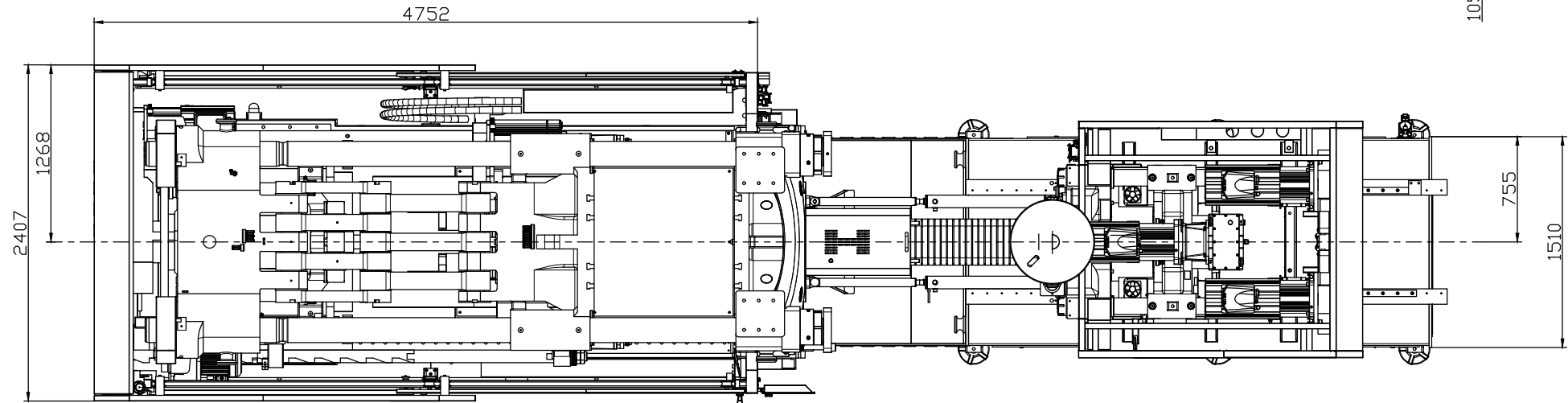
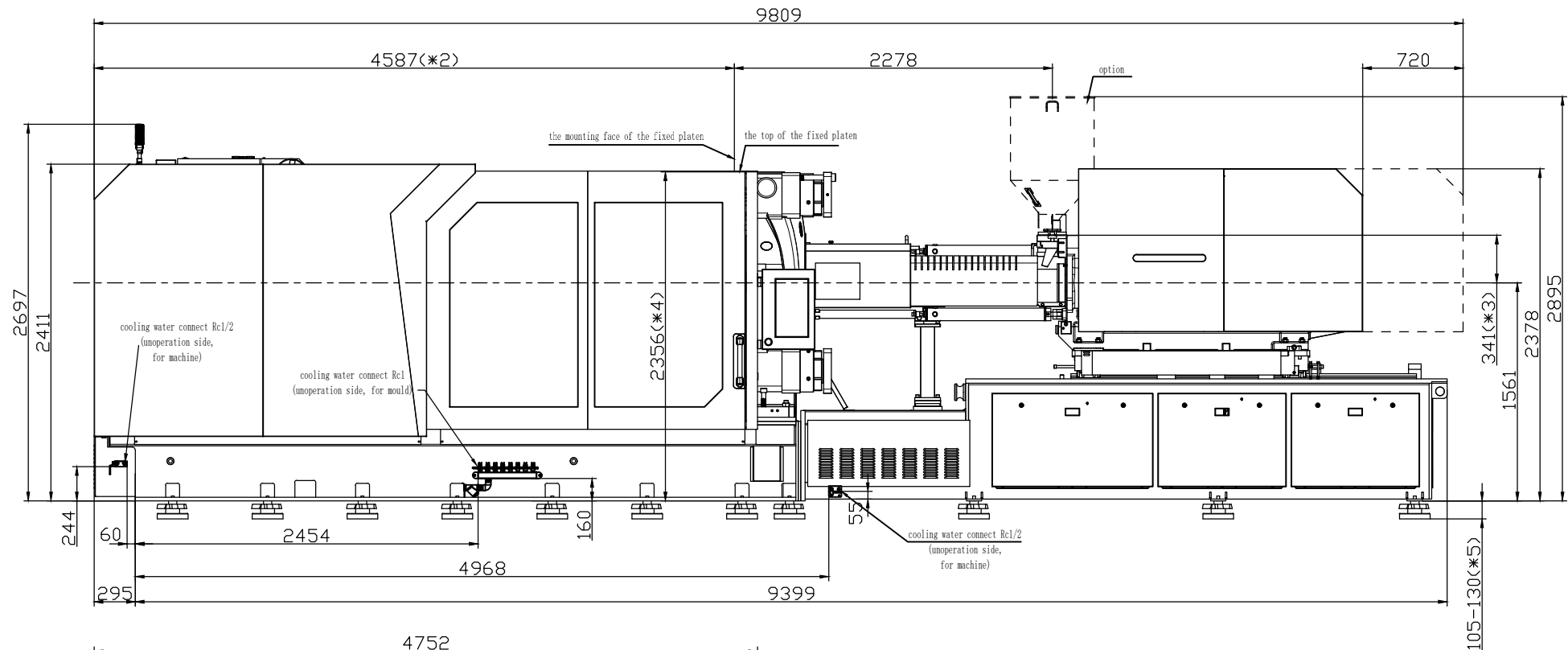
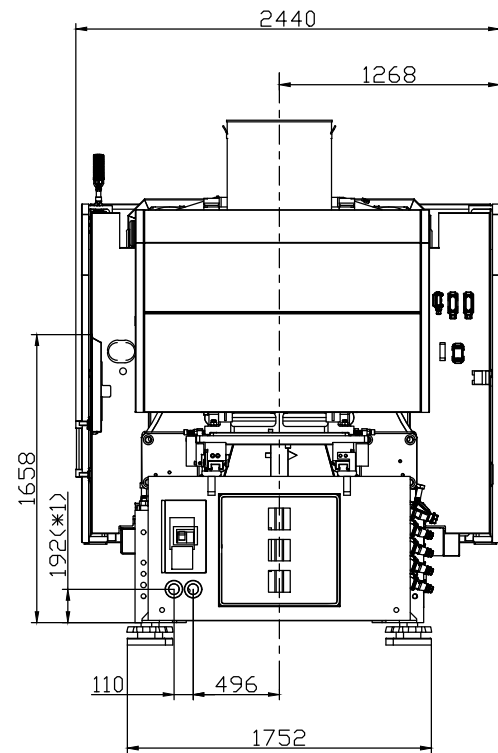
The designs on this drawing were validated using machine manufacturer's drawings and/or information supplied by Absolute or the customer. It is the responsibility of the customer to review and confirm that all dimensions are consistent with the application intended and in accordance with the facility requirements for space, part clearance, overhead clearance, or any other interference. By signing this document, the customer accepts full responsibility for this design and application.

Customer:

Customer Approval:

Authorized Signature

Notes:



- \*1 Power in  
Current and Power Cable are shown  
in the Main Power Supply Circuit
- \*2 To the mounting face of the  
fixed platen
- \*3 To the face of Hopper fixing platform
- \*4 To the top of the fixed platen
- \*5 Vibration dumping support



Absolute Haitian Corporation  
33 Southgate St. Worcester, MA  
T:+1 508-792-4305  
www.absolutehaitian.com

Title: ZE V 8000-5200 Layout Drawing

Machine Model: ZE V 8000-5200

Machine Serial Number:

Machine Tonnage:

Sheet: 1 of 1

Drawn By: Harry

Date: 3/22/2024

Chkd By: LEON XIE

Date: 3/22/2024

NOT TO SCALE

Size: 11 X 17 "B"

Units: mm / [in]

Material:

Part:

Part:

Part:

Part:

PLEASE READ:

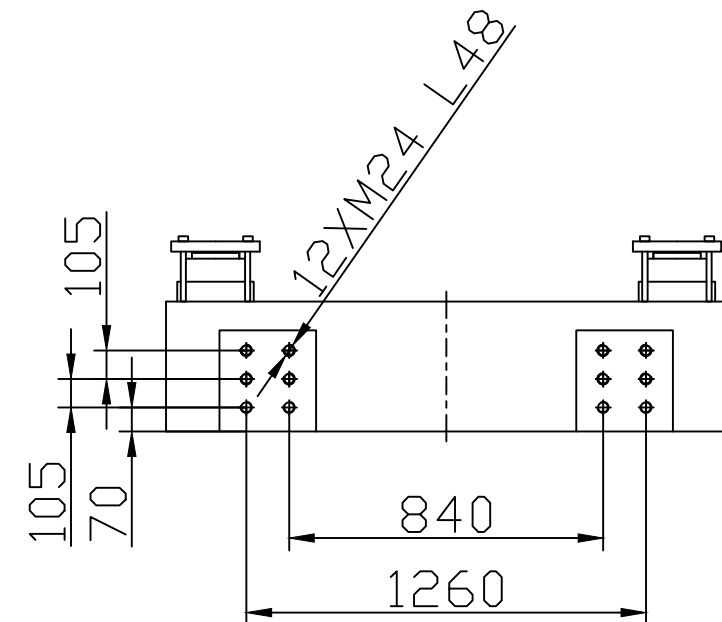
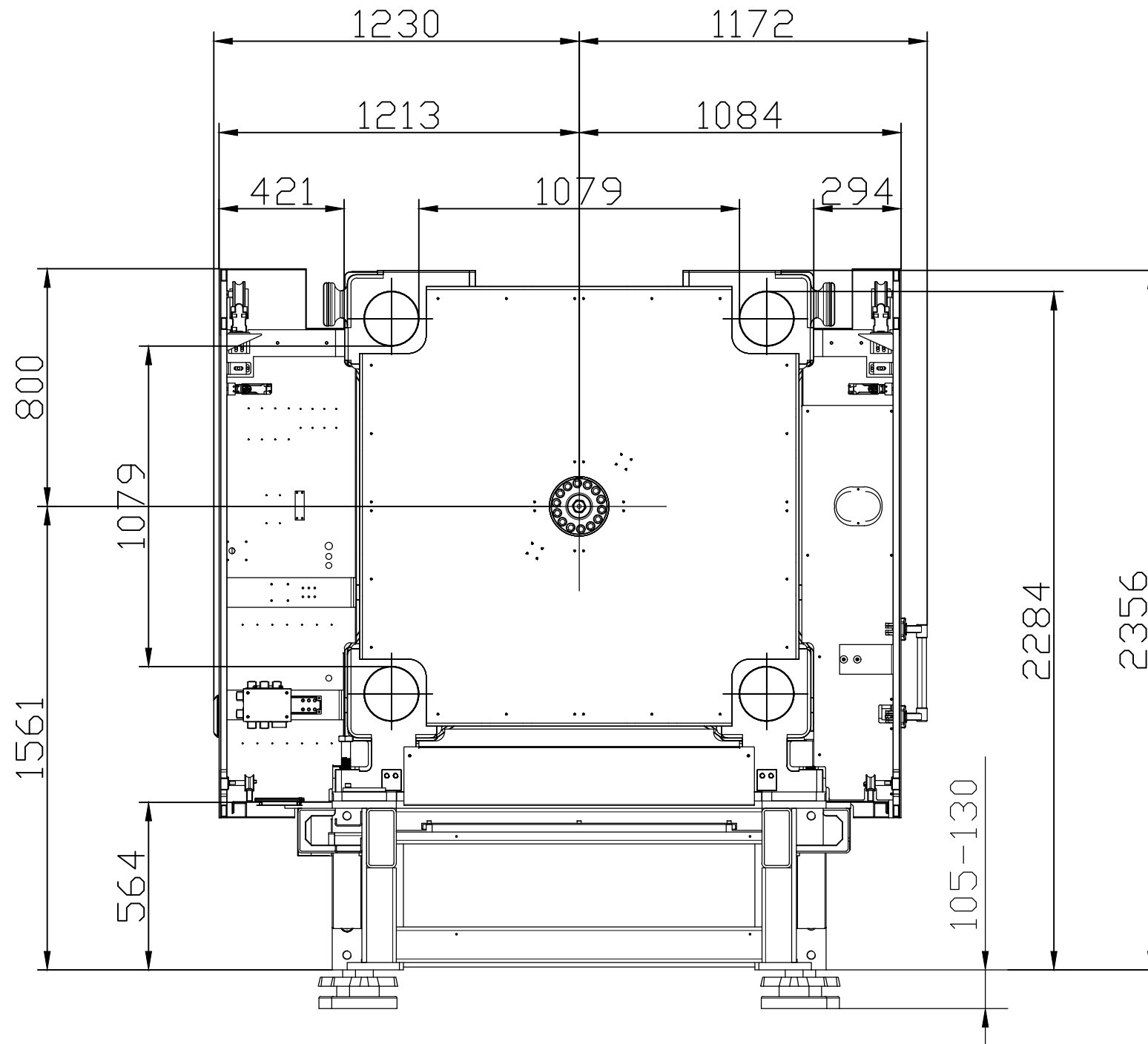
The designs on this drawing were validated using machine manufacturer's drawings and/or information supplied by Absolute or the customer. It is the responsibility of the customer to review and confirm that all dimensions are consistent with the application intended and in accordance with the facility requirements for space, part clearance, overhead clearance, or any other interference. By signing this document, the customer accepts full responsibility for this design and application.

Customer:

Customer Approval:

Authorized Signature

Notes:



Absolute Haitian Corporation  
33 Southgate St. Worcester, MA  
T:+1 508-792-4305  
www.absolutehaitian.com

Title: ZE V 8000 Robot Mounting Drawing

Machine Model: ZE V 8000  
Machine Serial Number:  
Machine Tonnage:

Sheet: 1 of 1

Drawn By: Harry

Date: 4/9/2024

Chkd By: LEON XIE

Date: 4/9/2024

Revision Date: Drawing #: Robot Mounting

NOT TO SCALE

Size: 11 X 17 "B"

Rev #: 1

Rev #: 2

Rev #: 3

Rev #: 4

Rev #: 5

Units: mm / [in]

Material:

Part:

Part:

Part:

Part:

PLEASE READ:

The designs on this drawing were validated using machine manufacturer's drawings and/or information supplied by Absolute or the customer. It is the responsibility of the customer to review and confirm that all dimensions are consistent with the application intended and in accordance with the facility requirements for space, part clearance, overhead clearance, or any other interference. By signing this document, the customer accepts full responsibility for this design and application.

Customer:

Customer Approval:

Authorized Signature

Notes: