

# Specification



## ZE900V-210

ZERES 5 Series: Electric with Integrated Hydraulics



Clamping Unit		ZE900 V
Clamping Force	kN	900
	US Tons	101
Mold Opening Stroke	mm	320
	in.	12.6
Minimum Mold Height	mm	150
	in.	5.91
Maximum Mold Height	mm	410
	in.	16.14
Maximum Daylight	mm	730
	in.	28.74
Distance Between Tie-Bars (HXV)	mm	420x420
	in.	16.54x16.54
Platen Dimensions (HXV)	mm	580x580
	in.	22.83x22.83
Minimum Mold Size	mm	270x270
	in.	10.63x10.63
Ejector Stroke	mm	80
	in.	3.15
Ejector Force	kN	24.5
	US Tons	3

# Specification



## ZE900V-210

ZERES 5 Series: Electric with Integrated Hydraulics

Injection Unit		210			
Screw & Barrel Designation		AA	A	B	C
Screw Diameter	mm	26	28	32	36
	in.	1.02	1.10	1.26	1.42
Screw L/D Ratio	L/D	21	21	21	18.6
Injection Volume (Theoretical)	cm <sup>3</sup>	61	70	100	127
	cu.in.	3.72	4.27	6.10	7.75
Injection Weight (PS)	g	55	64	91	115
	oz.	1.94	2.26	3.21	4.06
Injection Pressure	MPa	280	260	200	160
	psi	40611	37710	29008	23206
Holding Pressure	MPa	224	206	160	126
	psi	32488	29878	23206	18275
Screw Speed	rpm	400	400	400	400
Plasticizing Rate (GPPS)	g/s	8.5	11	16	19.4
	oz./s	0.30	0.39	0.56	0.68
Nozzle Contact Force	kN	26	26	26	26
	US Tons	3	3	3	3
Injection Unit		210			
Injection Speed	mm/s	200			
	in./s	7.87			
Injection Rate (PS)	g/s	92	107	140	177
	oz./s	3.25	3.77	4.94	6.24
Injection Unit		210h			
Injection Speed	mm/s	350			
	in./s	13.78			
Injection Rate (PS)	g/s	162	188	245	311
	oz./s	5.71	6.63	8.64	10.97
Injection Unit		210hs			
Injection Speed	mm/s	500			
	in./s	19.69			
Injection Rate (PS)	g/s	231	268	351	444
	oz./s	8.15	9.45	12.38	15.66

# Specification



## ZE900V-210

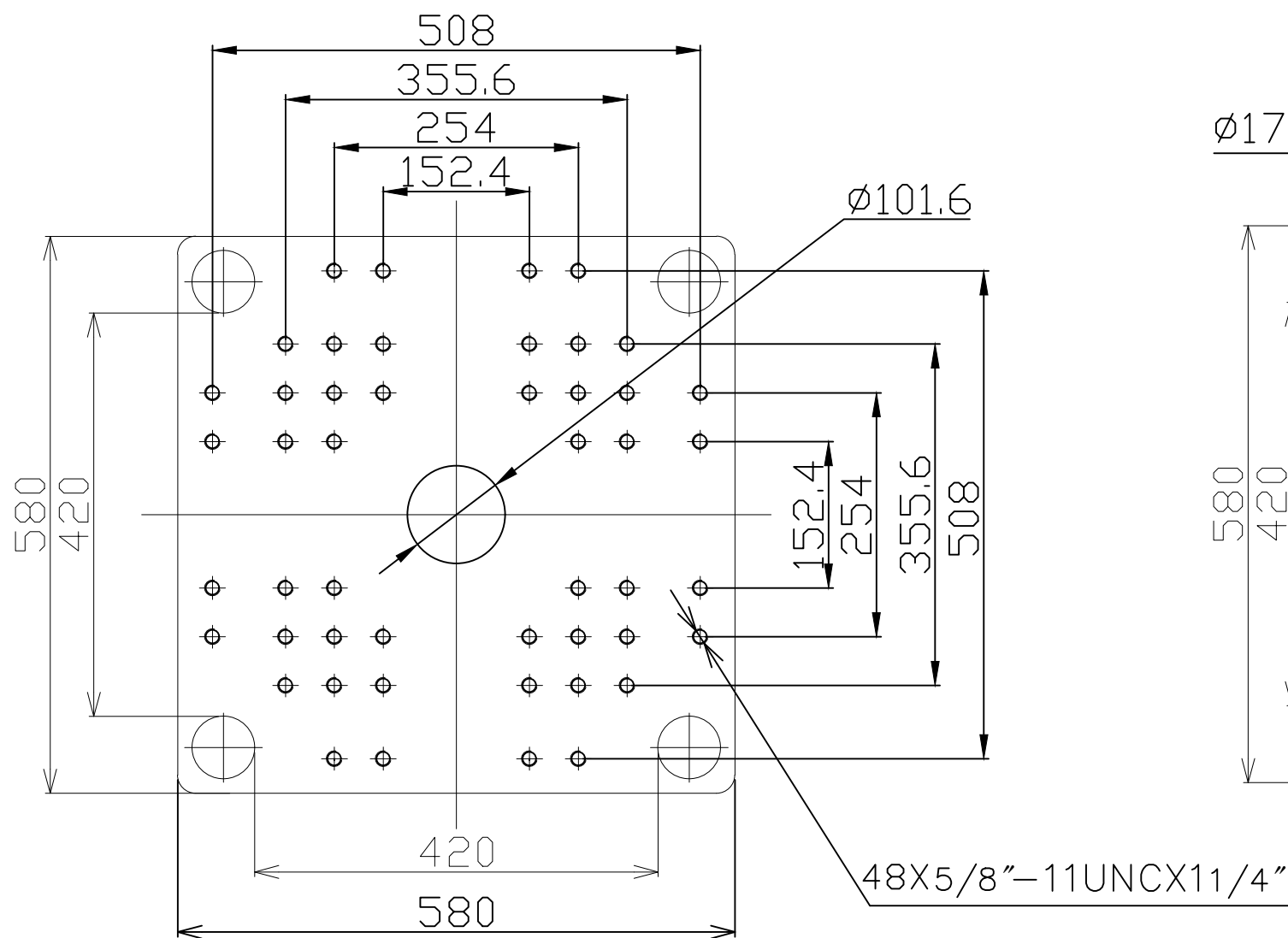
ZERES 5 Series: Electric with Integrated Hydraulics

Other					
Connection Power	kW/A	210:16/26 210h:21/36 210hs:29/48			
Heating Power	kW	6.9	7.8	9.2	9.2
Machine Dimension	m	4.39x1.23x2.03			
	in.	173x48x80			
Machine Weight	t	3.84			
	lbs.	8466			
Hopper Capacity (OP)	l	25			
	gal	7			
Oil Pressure	MPa	17.5			
	psi	2538			
Oil Flow	l/min	35			
	gal/min	9			
Oil Tank	l	47			
	gal	12			

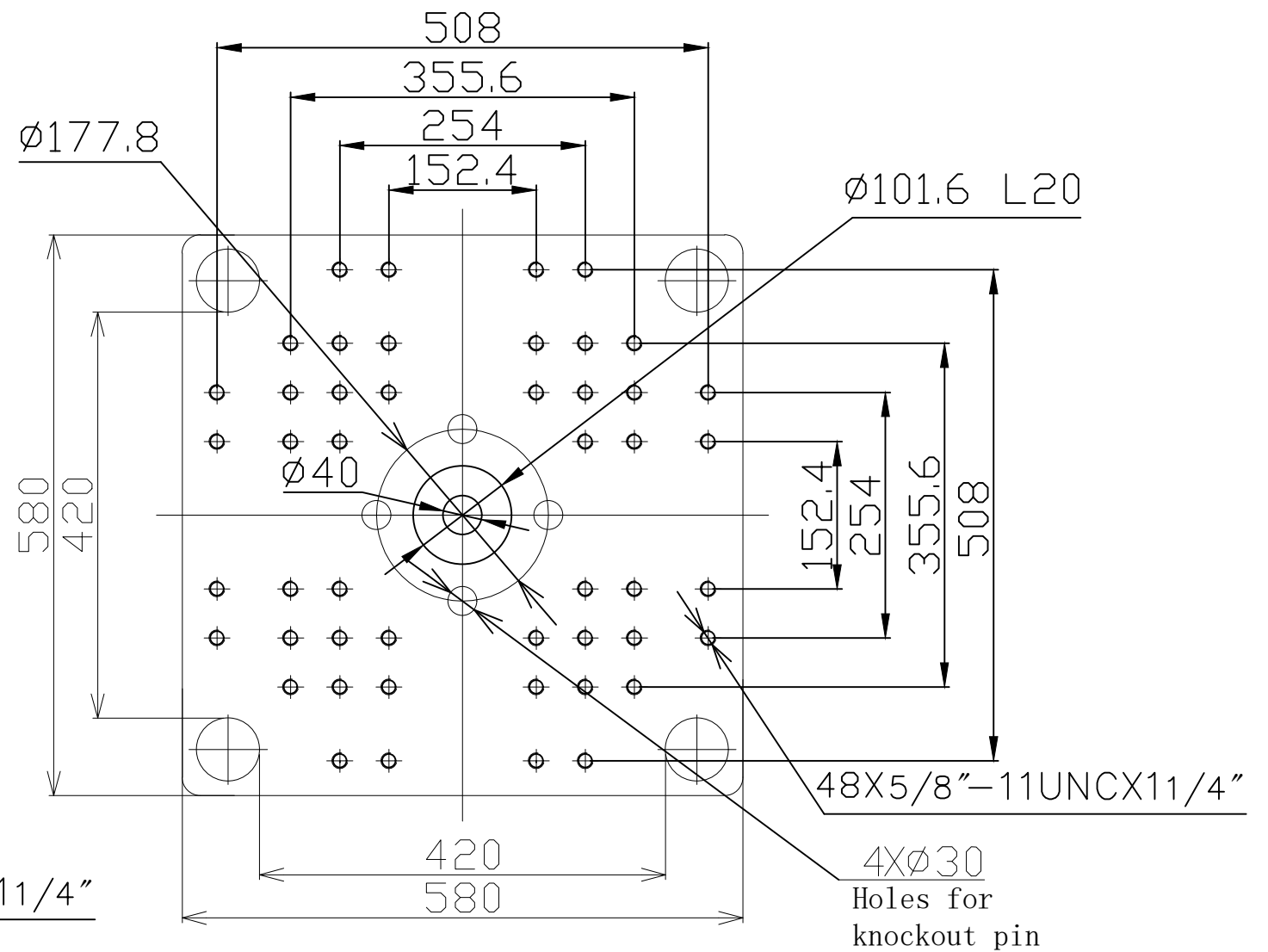
**\*NOTE:**

1. Machine dimensions and weights are based on the international standard configuration and are for reference only. Any options or country specific requirements will affect this. Contact Absolute Haitian service department for machine specific information.
2. Power requirements are based on the international standard configuration and are for reference only. Any options or country specific requirements will affect this. Contact Absolute Haitian service department for machine specific information.





Fixed Platen



Moving Platen



Absolute Haitian Corporation  
33 Southgate St. Worcester, MA  
T: +1 508-792-4305  
www.absolutehaitian.com

Title: ZE/VEV 900 Fixed & Moving Platens Drawing

Machine Model: ZE/VEV 900  
Machine Serial Number:  
Machine Tonnage:

Sheet: 1 of 1

Drawn By: Harry

Date: 1/9/2024

Chkd By: LEON XIE

Date: 1/9/2024

Revision Date: Drawing #:

Rev #: 1

Rev #: 2

Rev #: 3

Rev #: 4

Rev #: 5

NOT TO SCALE

Size: 11 X 17 "B"

Units: mm / [in]

Material:

Part:

Part:

Part:

Part:

PLEASE READ:

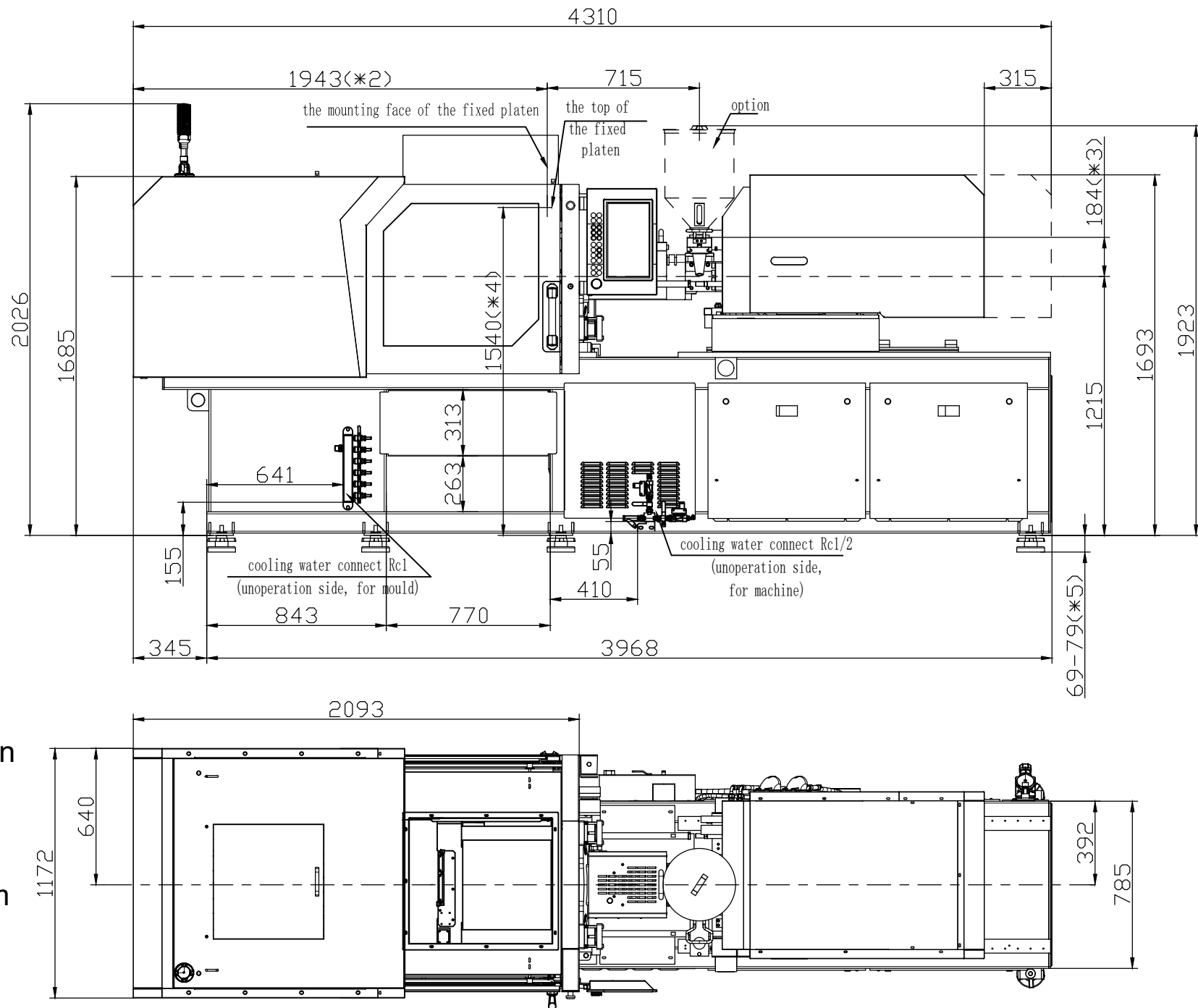
The designs on this drawing were validated using machine manufacturer's drawings and/or information supplied by Absolute or the customer. It is the responsibility of the customer to review and confirm that all dimensions are consistent with the application intended and in accordance with the facility requirements for space, part clearance, overhead clearance, or any other interference. By signing this document, the customer accepts full responsibility for this design and application.

Customer:

Customer Approval:

Authorized Signature

Notes:

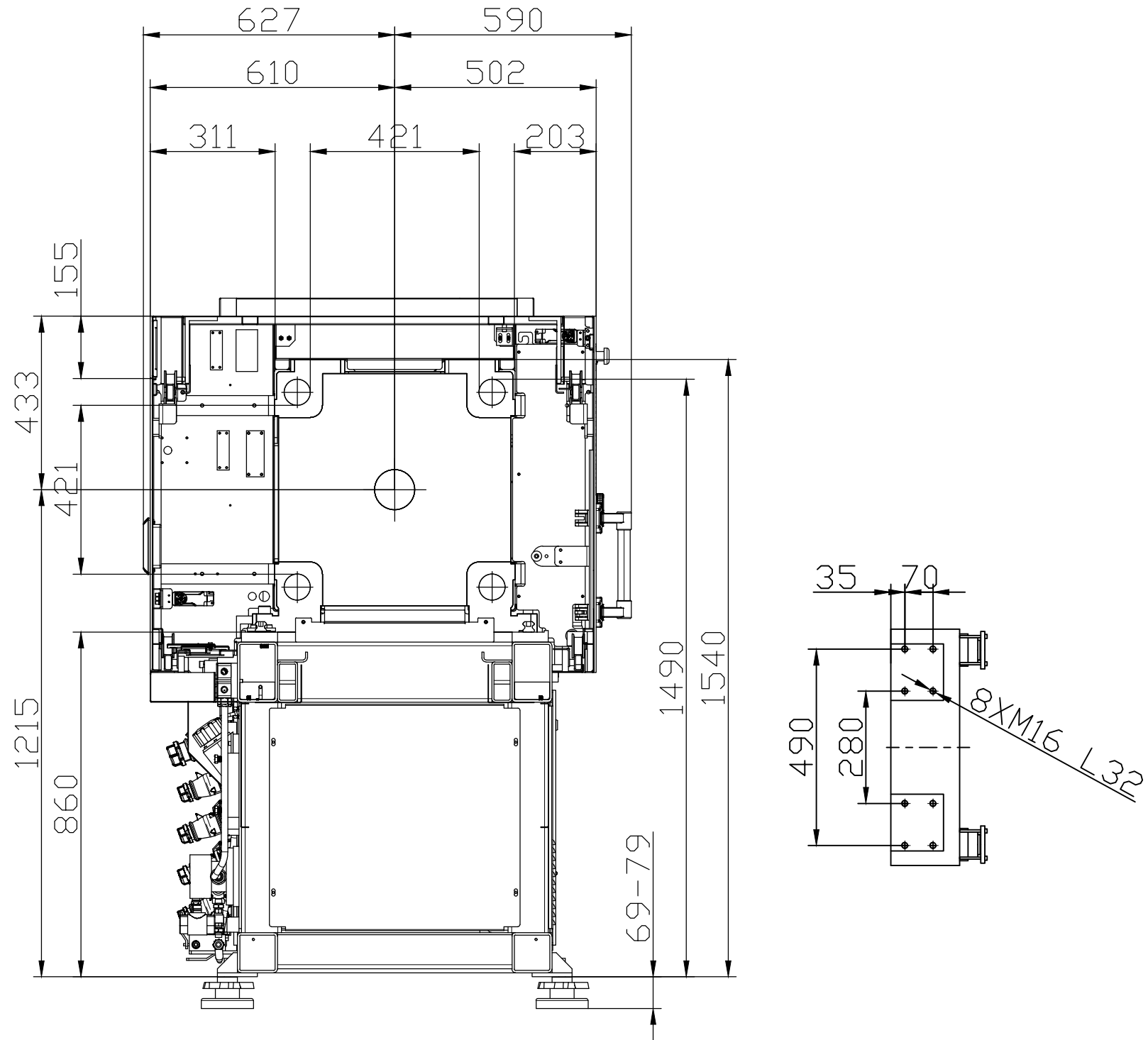


- 



<p><b>PLEASE READ:</b></p> <p>The designs on this drawing were validated using machine manufacturer's drawings and/or information supplied by Absolute or the customer. It is the responsibility of the customer to review and confirm that all dimensions are consistent with the application intended and in accordance with the facility requirements for space, part clearance, overhead clearance, or any other interference. By signing this document, the customer accepts full responsibility for this design and application.</p>	
<p><b>Customer:</b></p>	<p><b>Customer Approval:</b> Authorized Signature</p>

<b>Notes:</b>	
---------------	--



Absolute Haitian Corporation  
33 Southgate St. Worcester, MA  
T: +1 508-792-4305  
www.absolutehaitian.com

Title: ZE V 900 Robot Mounting Drawing

Machine Model: ZE V 900  
Machine Serial Number:  
Machine Tonnage:

Sheet: 1 of 1

Drawn By: Harry

Date: 4/9/2024

Chkd By: LEON XIE

Date: 4/9/2024

Revision Date: Drawing #: Robot Mounting

NOT TO SCALE

Size: 11 X 17 "B"

Rev #: 1

Rev #: 2

Rev #: 3

Rev #: 4

Rev #: 5

Units: mm / [in]

Material:

Part:

Part:

Part:

Part:

Part:

PLEASE READ:

The designs on this drawing were validated using machine manufacturer's drawings and/or information supplied by Absolute or the customer. It is the responsibility of the customer to review and confirm that all dimensions are consistent with the application intended and in accordance with the facility requirements for space, part clearance, overhead clearance, or any other interference. By signing this document, the customer accepts full responsibility for this design and application.

Customer:

Customer Approval:

Authorized Signature

Notes: