

# Specification



## ZE8500V-6700

ZERES 5 Series: Electric with Integrated Hydraulics



Clamping Unit		ZE8500 V
Clamping Force	kN	8500
	US Tons	955
Mold Opening Stroke	mm	1200
	in.	47.24
Minimum Mold Height	mm	450
	in.	17.72
Maximum Mold Height	mm	1100
	in.	43.31
Maximum Daylight	mm	2300
	in.	90.55
Distance Between Tie-Bars (HXV)	mm	1160x1160
	in.	45.67x45.67
Platen Dimensions (HXV)	mm	1550x1550
	in.	61.02x61.02
Minimum Mold Size	mm	770x770
	in.	30.31x30.31
Ejector Stroke	mm	200
	in.	7.87
Ejector Force	kN	230
	US Tons	26

# Specification



## ZE8500V-6700

ZERES 5 Series: Electric with Integrated Hydraulics

Injection Unit		6700		
Screw & Barrel Designation		A	B	C
Screw Diameter	mm	90	100	110
	in.	3.54	3.94	4.33
Screw L/D Ratio	L/D	24.4	22	20
Injection Volume (Theoretical)	cm <sup>3</sup>	2989	3691	4466
	cu.in.	182.40	225.24	272.53
Injection Weight (PS)	g	2720	3359	4064
	oz.	95.95	118.49	143.35
Injection Pressure	MPa	222	180	149
	psi	32198	26107	21611
Holding Pressure	MPa	200	162	133
	psi	29008	23496	19290
Screw Speed	rpm	170	170	170
Plasticizing Rate (GPPS)	g/s	103	127	150
	oz./s	3.63	4.48	5.29
Nozzle Contact Force	kN	85	85	85
	US Tons	10	10	10
Injection Unit		6700		
Injection Speed	mm/s	150		
	in./s	5.91		
Injection Rate (PS)	g/s	833	1029	1245
	oz./s	29.38	36.30	43.92

# Specification



## ZE8500V-6700

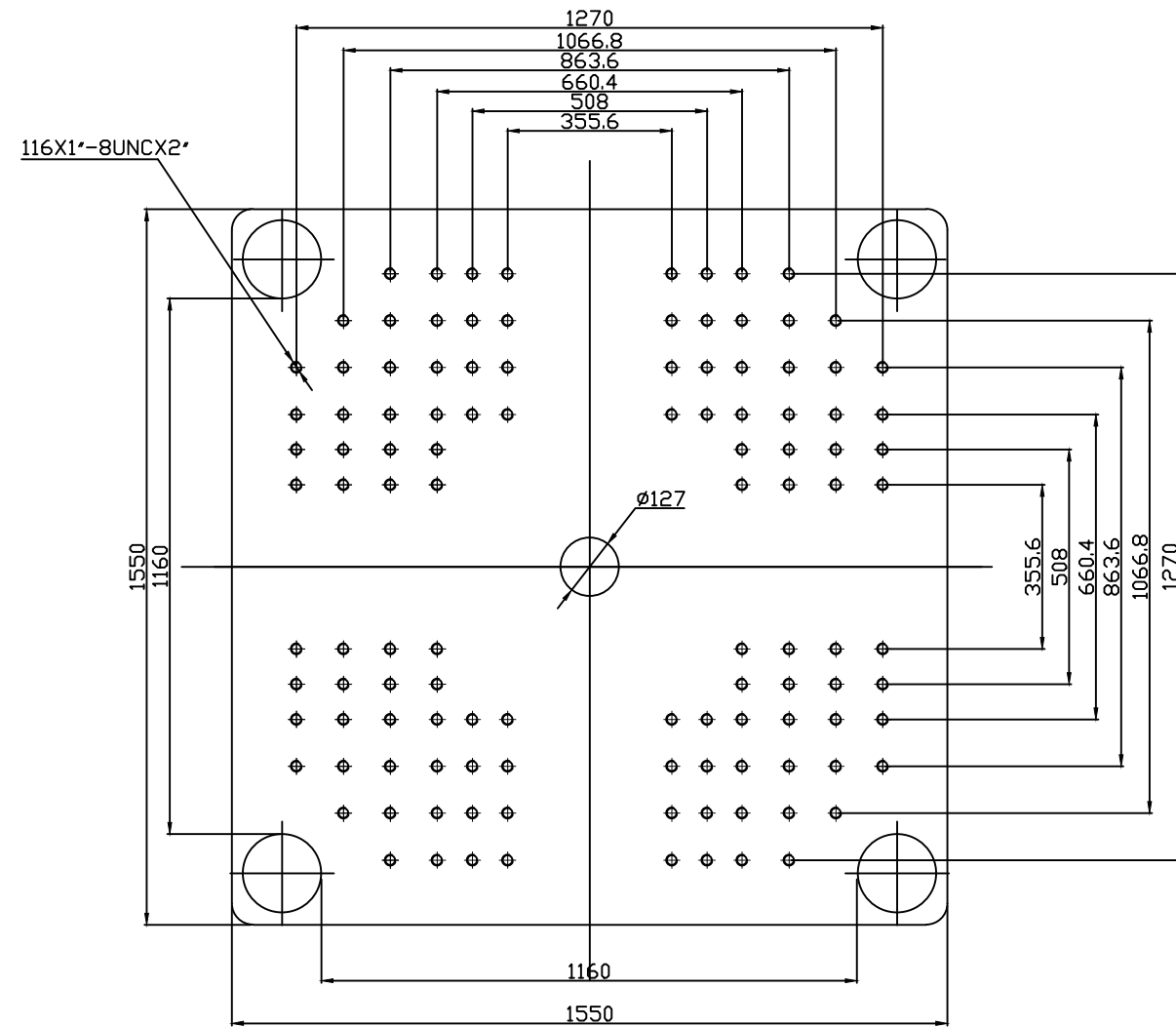
ZERES 5 Series: Electric with Integrated Hydraulics

Other		
Connection Power	kW/A	126/211
Heating Power	kW	75.6
Machine Dimension	m	11.17x2.49x2.67
	in.	440x98x105
Machine Weight	t	50.3
	lbs.	110893
Hopper Capacity	l	100
	gal	26
Oil Pressure	MPa	21
	psi	3046
Oil Flow	l/min	248
	gal/min	66
Oil Tank	l	411
	gal	109

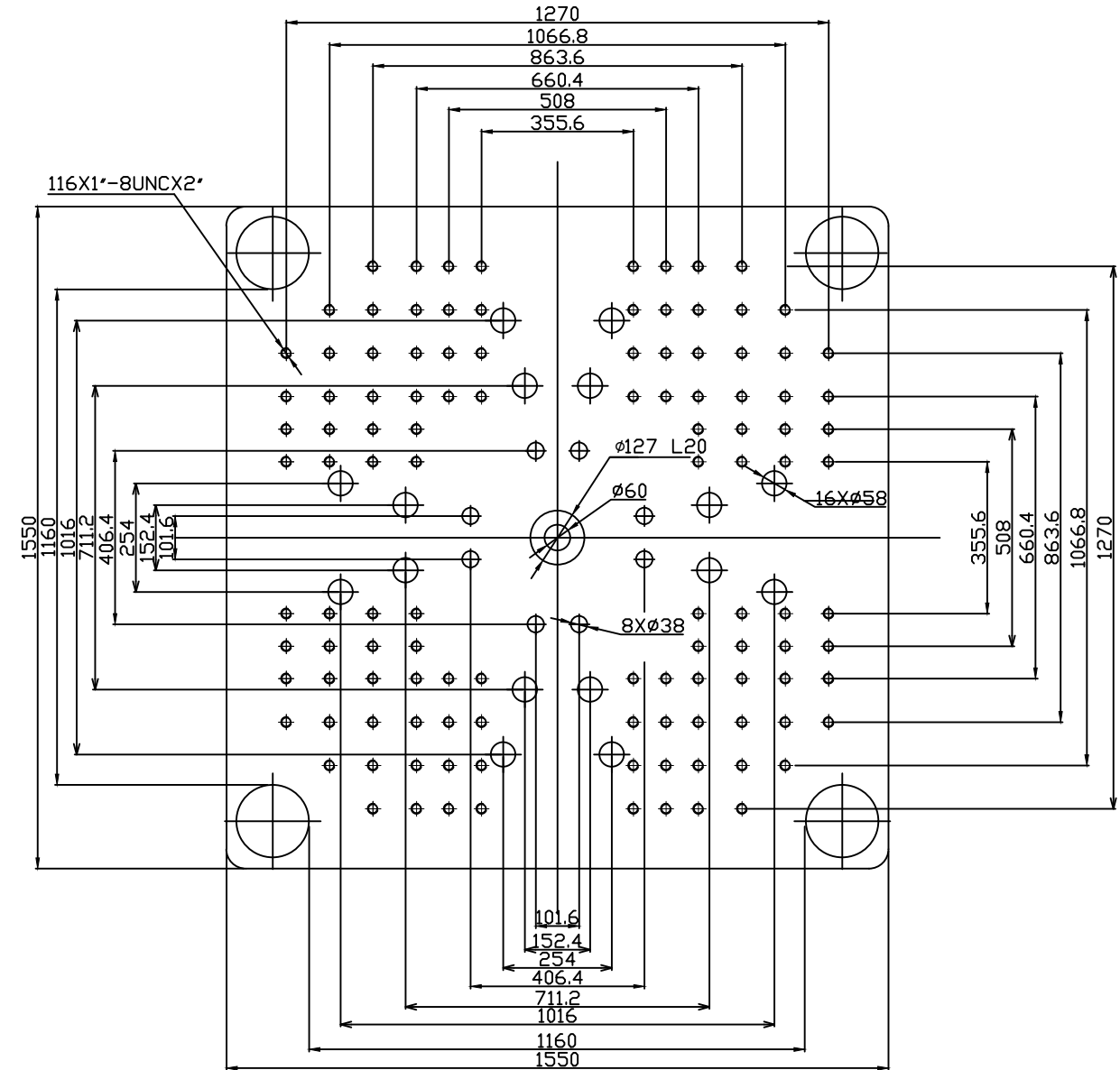
**\*NOTE:**

1. Machine dimensions and weights are based on the international standard configuration and are for reference only. Any options or country specific requirements will affect this. Contact Absolute Haitian service department for machine specific information.
2. Power requirements are based on the international standard configuration and are for reference only. Any options or country specific requirements will affect this. Contact Absolute Haitian service department for machine specific information.





Fixed Platen



Moving Platen



Absolute Haitian Corporation  
33 Southgate St. Worcester, MA  
T:+1 508-792-4305  
www.absolutehaitian.com

Title: ZE/VEV 8500 Fixed & Moving Platens Drawing

Machine Model: ZE/VEV 8500

Machine Serial Number:

Machine Tonnage:

Sheet: 1 of 1

Drawn By: Harry

Date: 1/9/2024

Chkd By: LEON XIE

Date: 1/9/2024

Revision Date: Drawing #:

Rev #: 1

Rev #: 2

Rev #: 3

Rev #: 4

Rev #: 5

NOT TO SCALE

Size: 11 X 17 "B"

Units: mm / [in]

Material:

Part:

Part:

Part:

Part:

PLEASE READ:

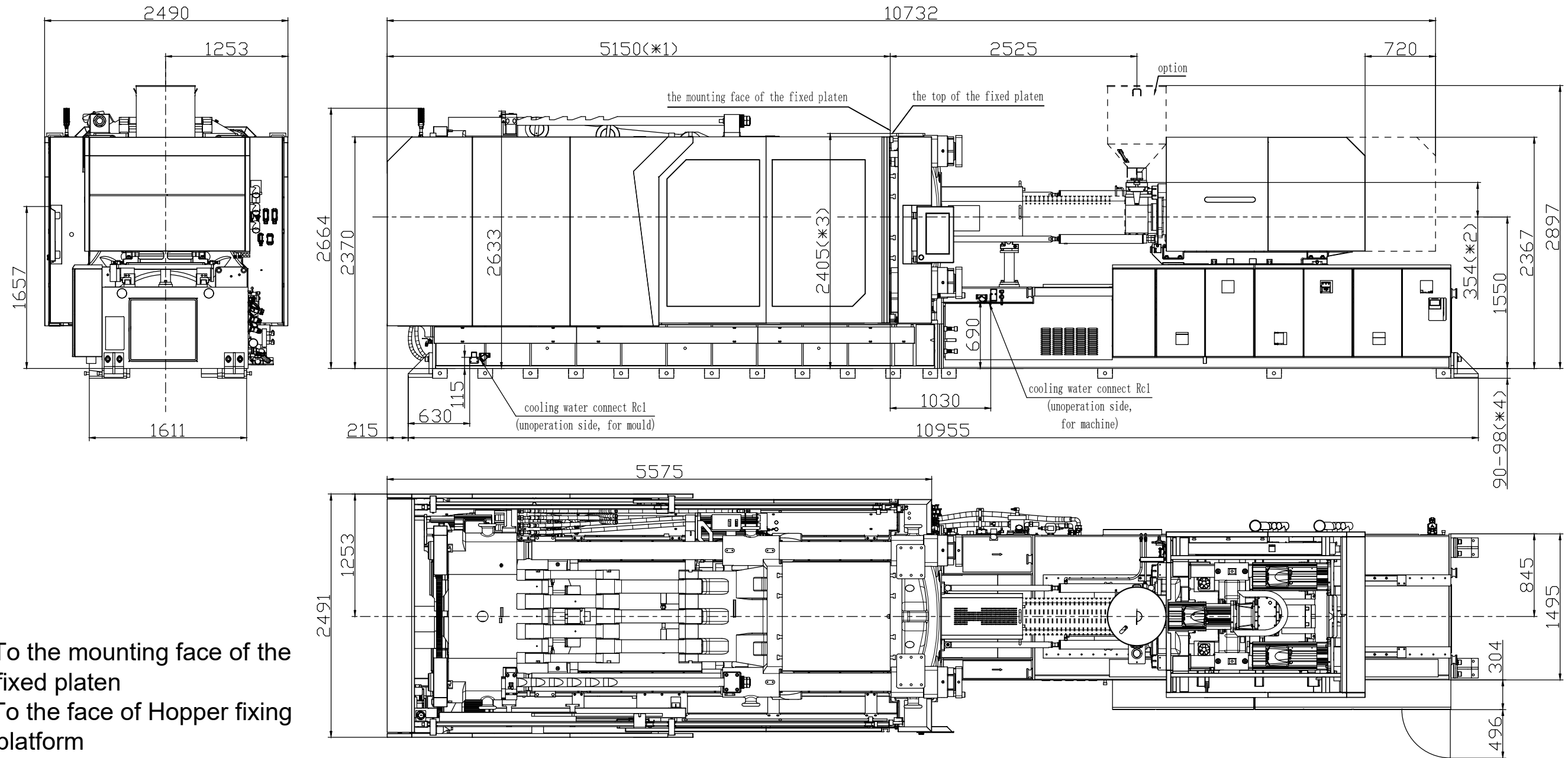
The designs on this drawing were validated using machine manufacturer's drawings and/or information supplied by Absolute or the customer. It is the responsibility of the customer to review and confirm that all dimensions are consistent with the application intended and in accordance with the facility requirements for space, part clearance, overhead clearance, or any other interference. By signing this document, the customer accepts full responsibility for this design and application.

Customer:

Customer Approval:

Authorized Signature

Notes:



- \*1 To the mounting face of the fixed platen
- \*2 To the face of Hopper fixing platform
- \*3 To the top of the fixed platen
- \*4 Vibration dumping support

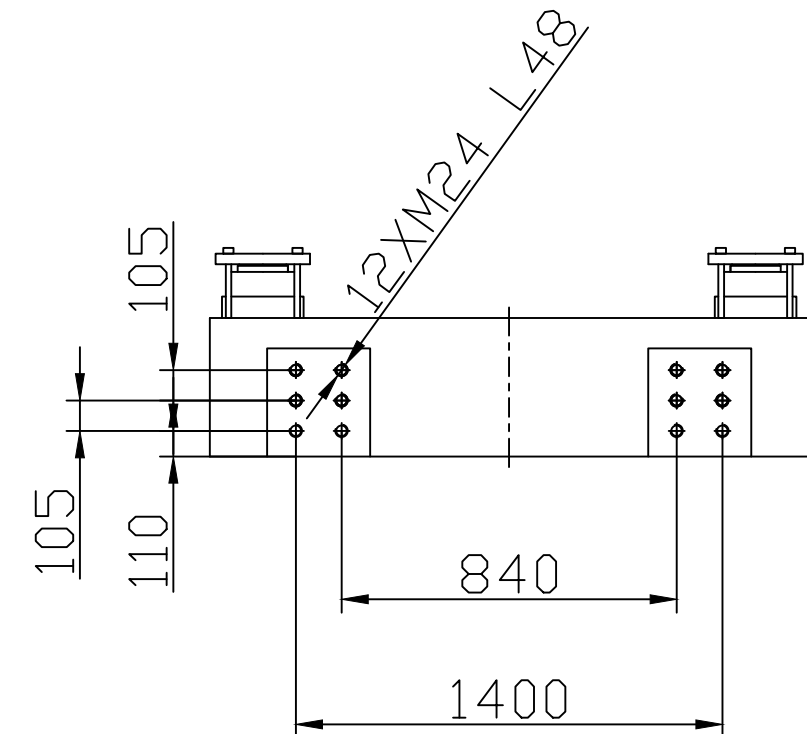
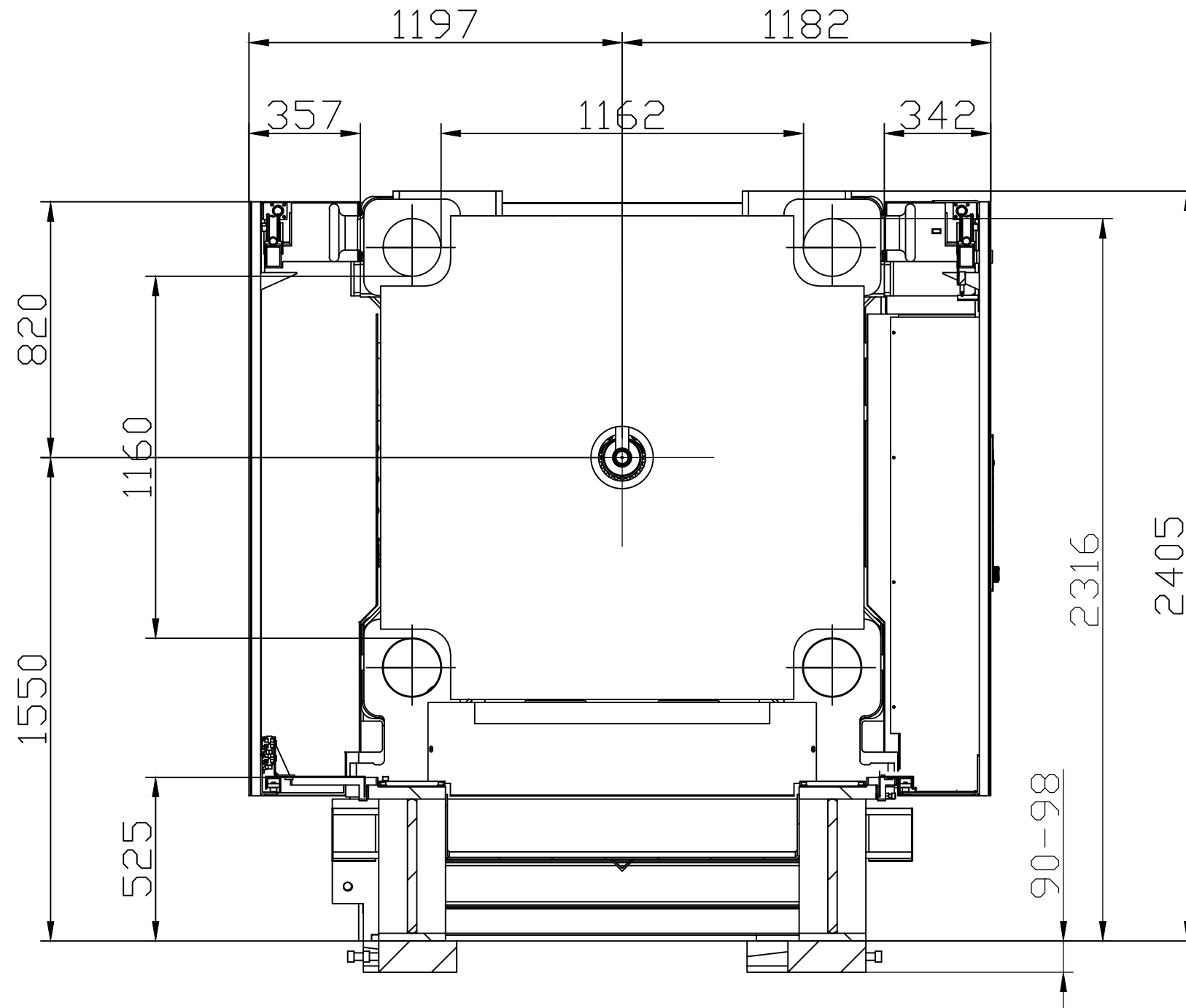


Absolute Haitian Corporation  
33 Southgate St. Worcester, MA  
T: +1 508-792-4305  
www.absolutehaitian.com

Title: ZE V 8500-6700 Drawing			Sheet: 1 of 1	
Machine Model: ZE V 8500-6700			Drawn By: Harry	Date: 3/22/2024
Machine Serial Number:			Chkd By: LEON XIE	Date: 3/22/2024
Machine Tonnage:			NOT TO SCALE	Size: 11 X 17 "B"
Revision	Date:	Drawing #: Layout	Units: mm / [in]	
Rev #: 1			Material: Part: Part: Part: Part:	
Rev #: 2				
Rev #: 3				
Rev #: 4				
Rev #: 5				

PLEASE READ: The designs on this drawing were validated using machine manufacturer's drawings and/or information supplied by Absolute or the customer. It is the responsibility of the customer to review and confirm that all dimensions are consistent with the application intended and in accordance with the facility requirements for space, part clearance, overhead clearance, or any other interference. By signing this document, the customer accepts full responsibility for this design and application.	
Customer:	Customer Approval: Authorized Signature

Notes:



Absolute Haitian Corporation  
33 Southgate St. Worcester, MA  
T: +1 508-792-4305  
www.absolutehaitian.com

Title: ZE V 8500 Robot Mounting Drawing				
Machine Model: ZE V 8500		Sheet: 1 of 1		
Machine Serial Number:		Drawn By: Harry	Date: 4/9/2024	
Machine Tonnage:		Chkd By: LEON XIE	Date: 4/9/2024	
Revision	Date:	Drawing #: Robot Mounting	NOT TO SCALE	Size: 11 X 17 "B"
Rev #: 1			Units: mm / [in]	
Rev #: 2			Material:	
Rev #: 3			Part:	
Rev #: 4			Part:	
Rev #: 5			Part:	

PLEASE READ:

The designs on this drawing were validated using machine manufacturer's drawings and/or information supplied by Absolute or the customer. It is the responsibility of the customer to review and confirm that all dimensions are consistent with the application intended and in accordance with the facility requirements for space, part clearance, overhead clearance, or any other interference. By signing this document, the customer accepts full responsibility for this design and application.

Customer:

Customer Approval:

Authorized Signature

Notes: